

Stanford

Set play vs. man (2)

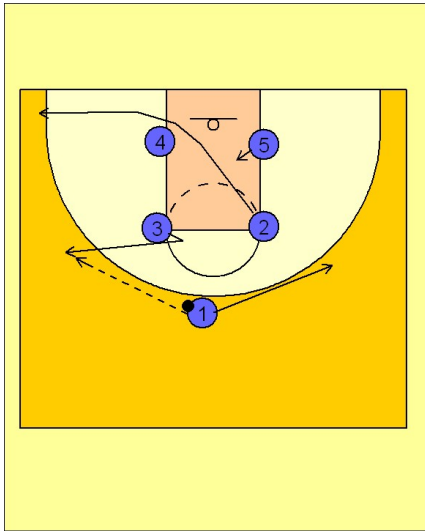
1

Stanford Set Play vs. Man Defense

Box set to begin.

#3 steps in and breaks out to his wing area looking for an entry pass from #1. #1 passes to #3 and then fades to the opposite wing. #2 breaks down and out to the ball side corner area.

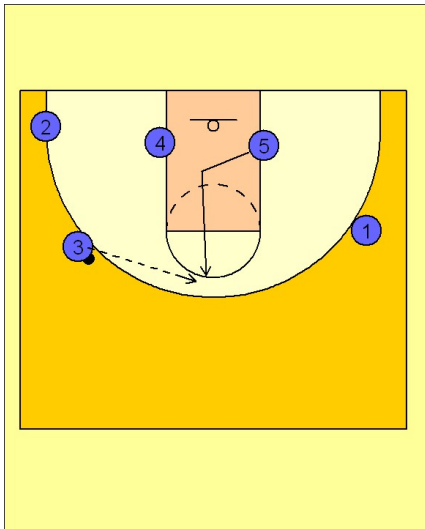
#5 starts to step in the middle of the lane.



2

Stanford Set Play vs. Man Defense

#5 then breaks up to the top of the key looking for a pass from #3. #3 passes to the #5 man at the top of the key.

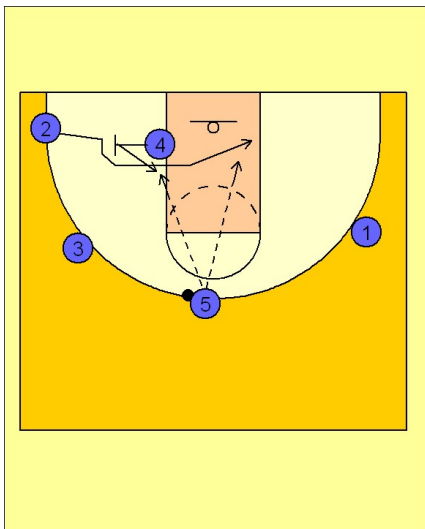


3

Stanford Set Play vs. Man Defense

Once #5 receives the pass, #4 steps out and sets a back screen for #2 on the wing. #2 cuts over the top of the screen and across the lane. If he is open, #5 will hit him for a layup.

#4, after screening, steps into the lane looking for a post entry pass from #2. This is a great option to get the ball on the low block for your post player.

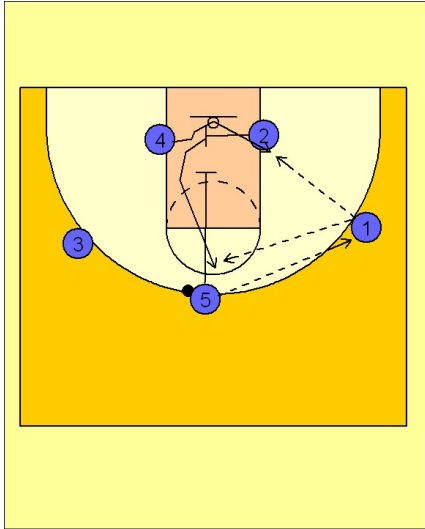


Stanford

Set play vs. man (2)

4

Stanford Set Play vs. Man Defense



If nothing is open inside, #5 passes over to #1 on the wing. #2 will then screen back across for #4, bringing him to the ball side block. After screening, #2 will look for a down screen from #5 and an open jump shot on top.