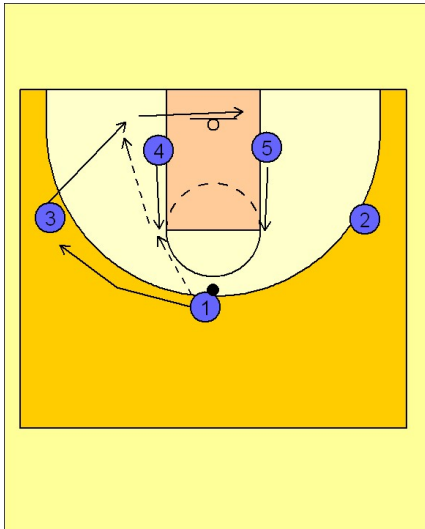


# Stanford

## Set play vs. man (3)

1



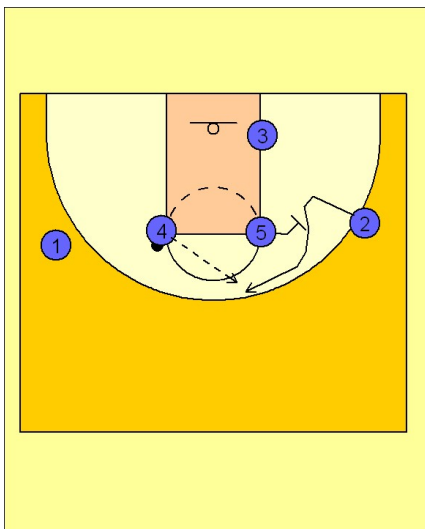
Stanford Set Play vs. Man Defense

#4 and #5 flash to the high post looking for the entry pass from #1.

#1 hits #4 and the ball side wing, #3, breaks to to the basket looking for the quick back door pass and layup. If he doesn't get it he continues across the lane to the opposite block.

After passing to #4, #1 cuts to the ball side wing and replaces #3.

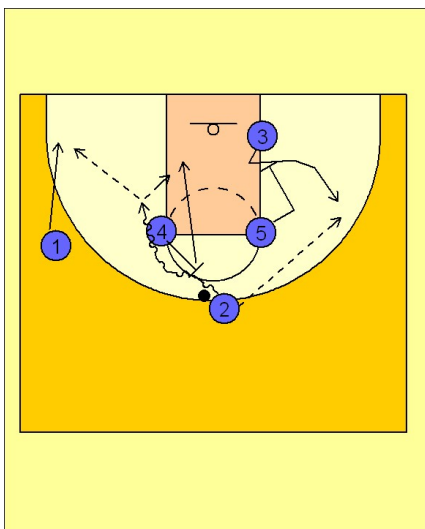
2



Stanford Set Play vs. Man Defense

Once #4 has the ball, #5 sets a screen for #2 to come over the top looking for the shot.

3



Stanford Set Play vs. Man Defense

Once #2 has the ball on top, #5 will down screen for #3 on the block trying to free him for a shot on the wing. #2 may also use a ball screen from #4, looking to drive the ball all the way to the basket if it is available. If not, #2 will look for #1 spotting up in the corner or #4 who has rolled to the basket after the ball screen.