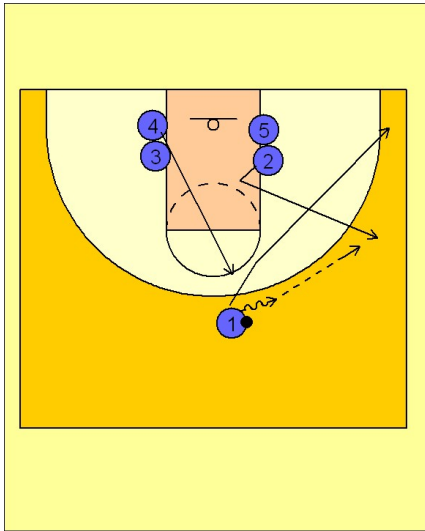


Stanford

Set play vs. man (4)

1



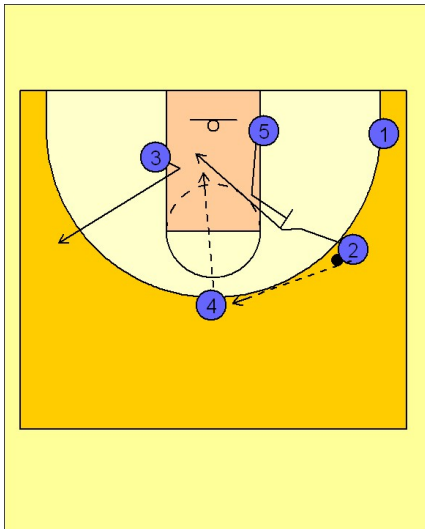
Stanford Set Play vs. Man Defense

Stack on the low block to begin.

#2 breaks out to the wing area looking for the entry pass from #1. After passing to #2, #1 breaks to the ball side corner.

#4 flashes to the high post after #2 receives the ball.

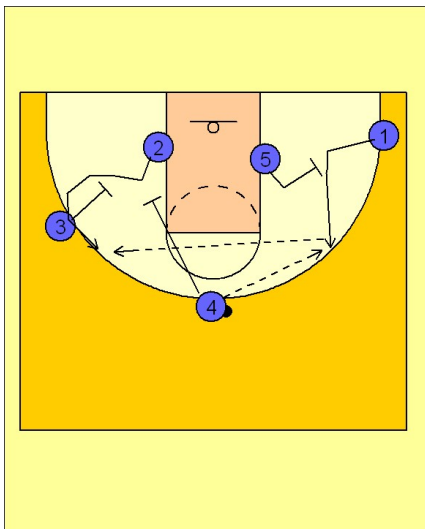
2



Stanford Set Play vs. Man Defense

#2 hits #4 on top. #3 breaks out to the wing area looking for a pass from #4. Once #2 passed to #4, #5 sets a diagonal back screen for #2. #2 will break down and across the lane looking for a pass from #4.

3



Stanford Set Play vs. Man Defense

If #2 is not open cutting across, Stanford will usually do one of two things with #4 holding the ball on top.

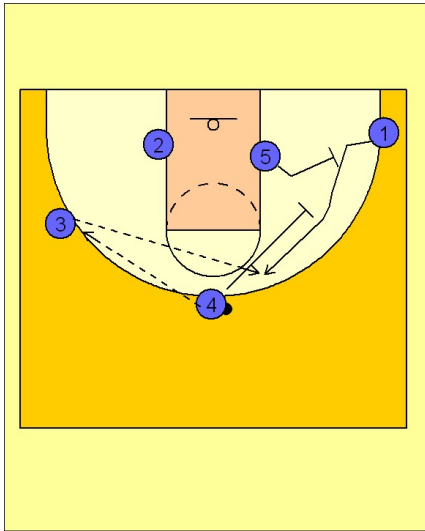
One option is #5 screening for #1 and getting a pass from #4. Once #4 passes to #1, #4 and #3 will set a double or staggered screen for #2 trying to free him for a shot on top.

Stanford

Set play vs. man (4)

4

Stanford Set Play vs. Man Defense



Another option would be for #4 to pass the ball to #3 on the wing and then set a double or staggered screen with #5 for #1, trying to free him for a shot on top.