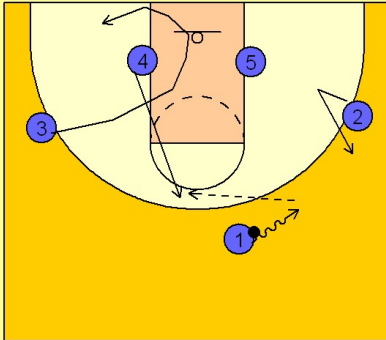


Stanford

Set play vs. man (5)

1

Stanford Set Play vs. Man

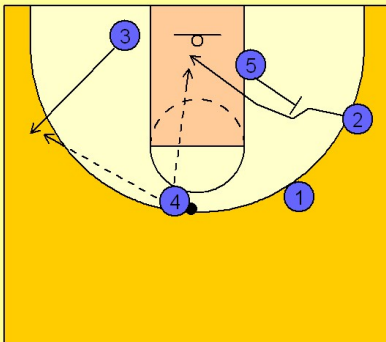


#1 takes the ball on the dribble towards the right side and #2. #2 fakes in then breaks out to the same spot he started.

#3 curls down and around #4 to the short corner or opposite low block area. #4 flashes to the high post looking for an entry pass from #1.

2

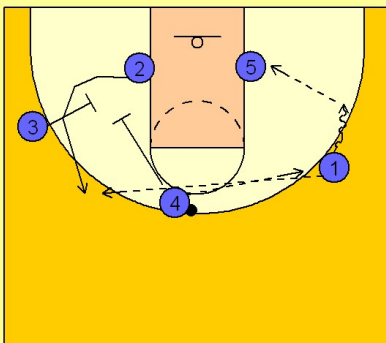
Stanford Set Play vs. Man



Once #4 has the ball, #3 breaks out to his respective wing area. #5 sets a diagonal back screen for #2 who cuts across the lane looking for a pass and layup from #4. #4 may also pass to #3 if #2 is not open.

3

Stanford Set Play vs. Man



If #4 decides to pass the ball back to #1, #4 and #3 will set a double or staggered screen for #2 on the opposite block. #1 will look to create a good passing angle for #5 isolated on the ball side block. #1 can hit #5 on the block or #2 coming off the double or staggered screen.

Stanford

Set play vs. man (5)

4

Stanford Set Play vs. Man

If #2 receives the ball off the double or staggered screen on top, #1 and #5 will set staggered down screens for #3. #4 will also set a down screen for #3. #3 has the option to come out either side of the screening action.

