

Stanford

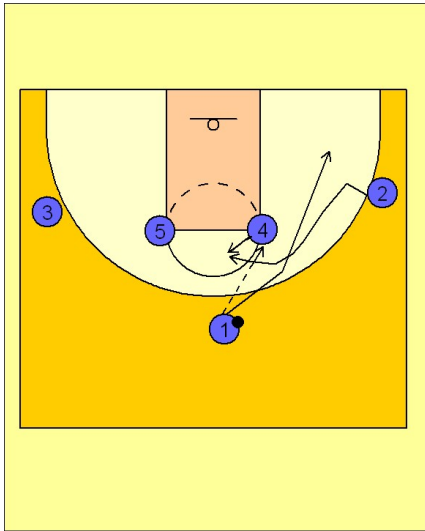
Set play vs. man (6)

1

Stanford Quick Hitter vs. Man Defense

1 - 4 high alignment.

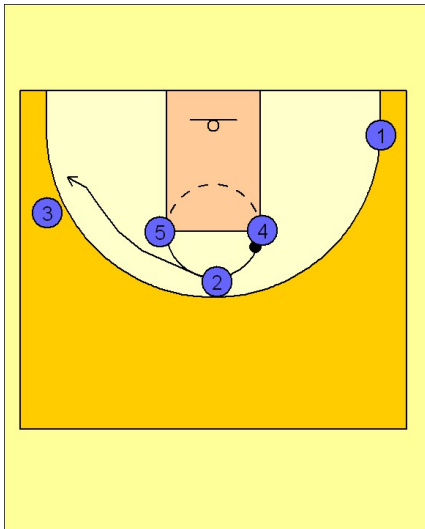
#1 hits #4 with an entry pass. #1 cuts to the ball side corner area. As #1 is cutting through, #2 cuts off of his back, creating a scissor cut. #4 looks for #2 coming off the scissor cut for a jump shot on top.



2

Stanford Quick Hitter vs. Man Defense

If #2 does not receive the pass, he cuts all the way through out to the opposite wing or corner area.



3

Stanford Quick Hitter vs. Man Defense

#4 now takes the ball on the dribble toward the middle looking to execute a dribble hand off with #3 on top.

#3 can look for the shot off the hand off or can take the ball on the dribble into the lane looking for a layup opportunity or a drive and kick out to #1 on the wing.

