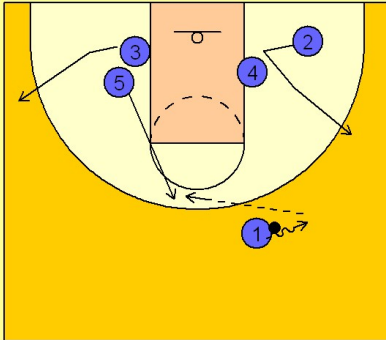


Stanford

Set play vs. man (7)

1

Stanford Set Play vs. Man Defense

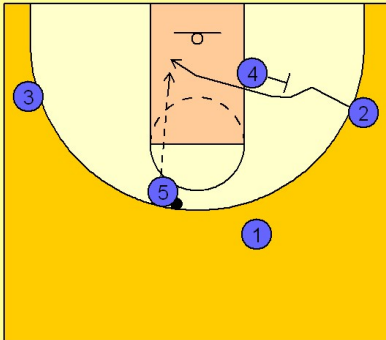


#1 takes the ball over to the right side of the floor. #2 and #3 break out to their respective wings. #5 flashes to the high post area.

#1 enters the ball to #5 in the high post.

2

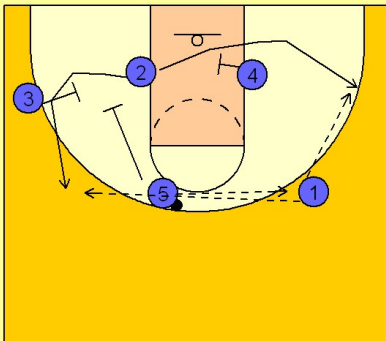
Stanford Set Play vs. Man Defense



#5 will then look for #2 coming off of a back screen from #4, if he is open.

3

Stanford Set Play vs. Man Defense



If #2 is not open, #5 will pass the ball to #1.

If he passes to #1, #5 and #3 will set a double down screen or staggered screen for #2. #2 can use that double or he can come out to the ball side off of the single screen from #4.