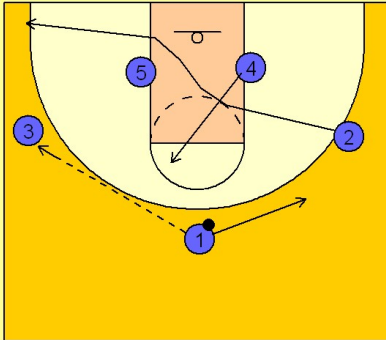


Stanford

Set play vs. man (9)

1

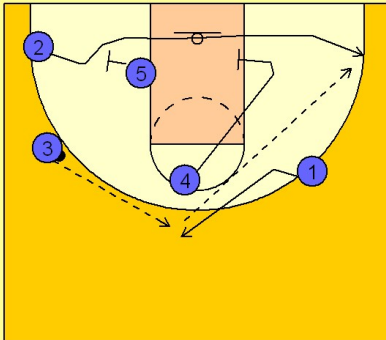
Stanford Set Play vs. Man Defense



#1 enters the ball to #3 on the left wing and fades to the back side of the floor. #2 cuts across to the ball side corner. #4 flashes to the high post area, simulating another of Stanfords familiar set plays.

2

Stanford Set Play vs. Man Defense



Just as #4 gets to the top of the key area, he immediately cuts back to the low block from where he started.

#1 cuts back to the top and looks for #2 coming off of baseline screens from #5 and #4. Stanford creates a nice miss direction on this play, making you think one of the other sets are about to be executed.