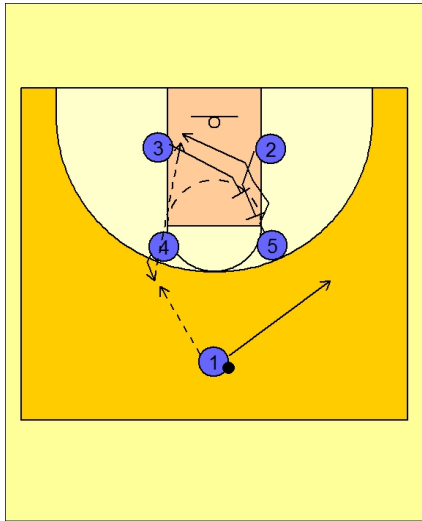




Quick hitter (6)



St. Joe's Quick Hitter vs. Man Defense

Box set to begin.

#4 steps out to receive the entry pass from #1. #1 cuts away to the opposite top / wing area.

On the catch, #2 and #3 are setting a double staggered back screen for #5.

#5 cuts under the screens and looks to receive the post entry pass from #4.