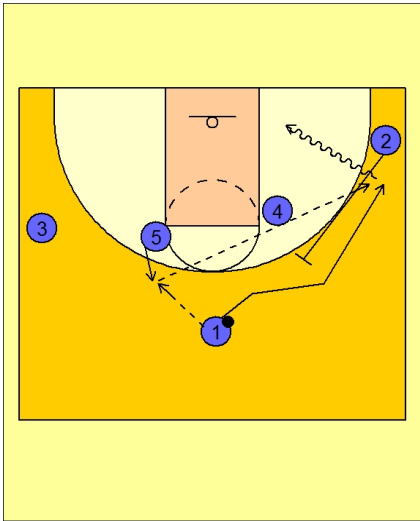




Set play vs. man (11)

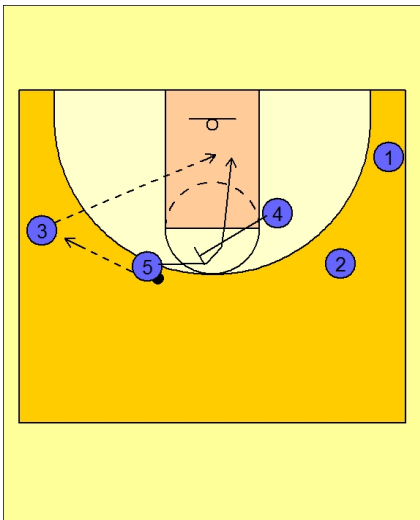


St. Joe's Set Play vs. Man

#1 enters to #5 stepping out to receive the pass.

#2 sets a flare screen for #1 on top.

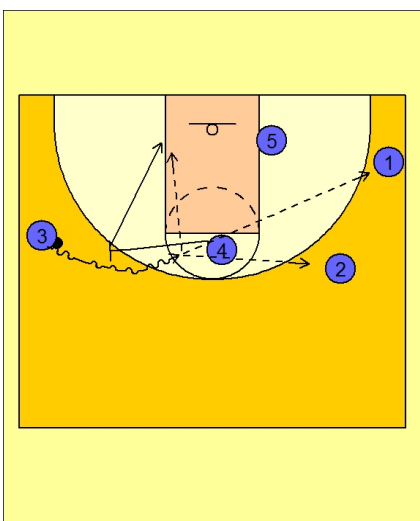
#5 looks to skip the ball over the top if #1 is open. #1 can catch and shoot or look to catch and attack the open rim.



St. Joe's Set Play vs. Man

If #5 does not make the pass to #1, he will throw the ball to #3 on the left wing.

#4 then sets a back screen for #5. #3 looks to hit #5 cutting to the rim.



St. Joe's Set Play vs. Man

If #5 does not receive the ball, #4 will continue his cut and ball screen for #3 on the left wing.

#4 rolls to the basket while #3 looks to attack on the dribble for the score or the kick out to #1 or #2 on the right side of the floor.