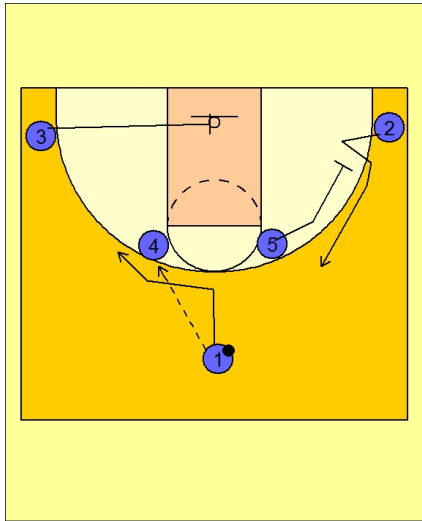




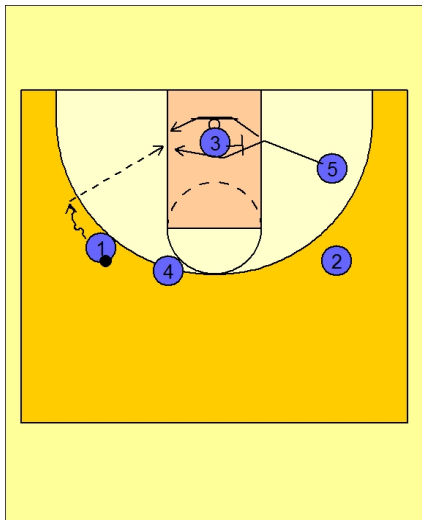
Set play vs. man (12)



St. Joe's Set Play vs. Man

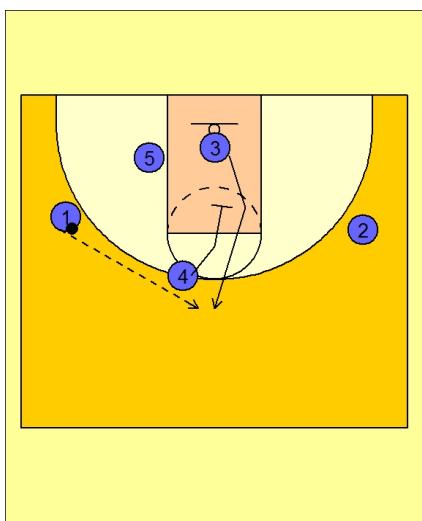
#1 enters the ball to #4 in the high post elbow area.

On the catch, #5 is screening away for #2 in the right corner, #1 is cutting down and then over the top of #4 and #3 is cutting into the lane under the basket.



St. Joe's Set Play vs. Man

If #4 gives the ball to #1 on the hand-off, #3 will screen for #5 cutting under the basket and posting up on the left block.



St. Joe's Set Play vs. Man

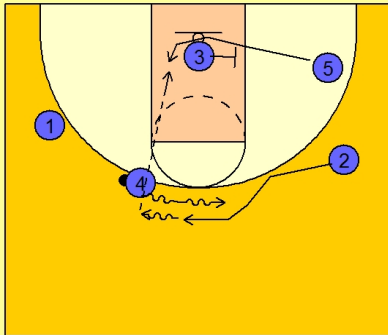
#4 would then "pick the picker" and screen down for #3. You could involve #2 here also in a double screen with #3.



St. Joe's Set Play vs. Man

If #1 did not get the hand-off from #4 at the start of the play, #4 would then dribble hand-off with #2.

#2 will take the ball from #4 and look to score, or dump the ball down to #5 in the lane, as #3 repeated the same screening action as before.



St. Joe's Set Play vs. Man

#4 then "picks the picker" again and down screens for #3.

