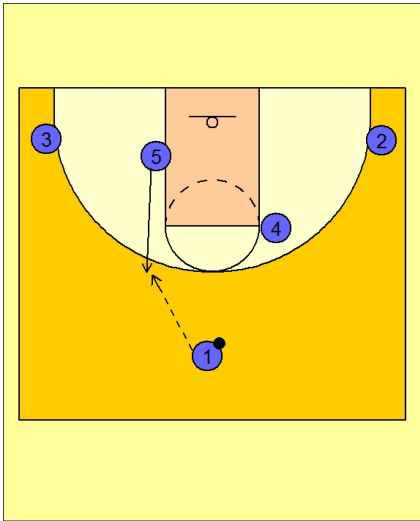


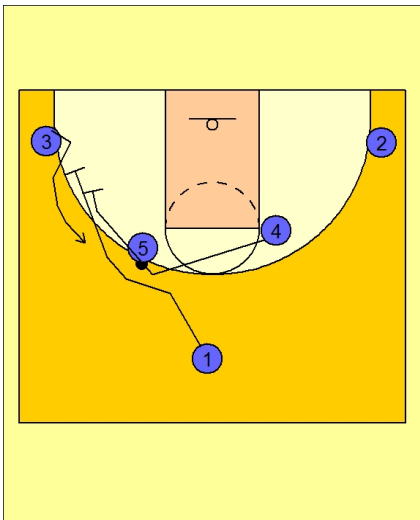


Set play vs. man (13)



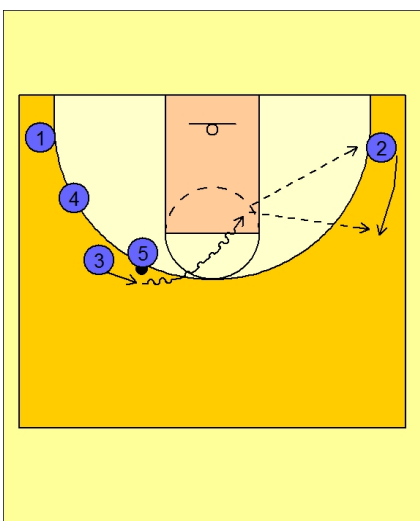
St. Joe's Set Play vs. Man

#5 cuts up to the high post elbow area to receive the entry pass from #1.



St. Joe's Set Play vs. Man

#1 follows his pass and cuts hard past #5 and sets a screen for #3 in the left corner area. #4 has followed #1 on his cut and also sets a screen for #3.



St. Joe's Set Play vs. Man

#3 comes off the double staggered screen from #1 and #4 and takes the hand-off from #5.

#3 looks to score or drive and kick out to #2 on the right side of the floor.



St. Joe's Set Play vs. Man

If #5 did not give the ball to #3, #1 is quickly following behind him off of a screen from #4.

#1 now takes the hand-off from #5 and looks to score or drive and kick out to #2 or #3.

