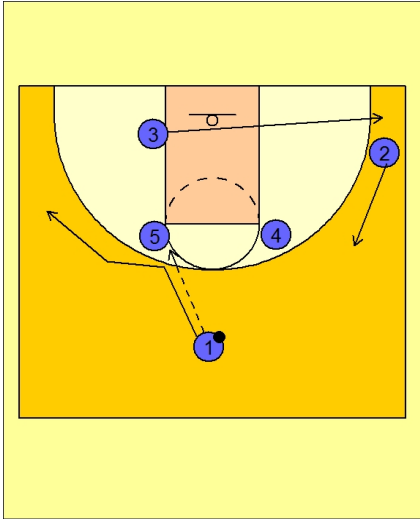




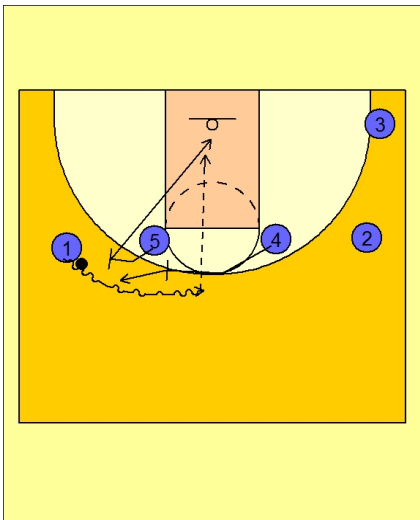
### Set play vs. man (14)



#### St. Joe's Set Play vs. Man

#1 enters the ball to #5 on the left high elbow area.

#1 cuts down and over the top of #5 and gets the ball back from #5. #3 clears out to the opposite corner and #2 cuts up to the opposite wing area.

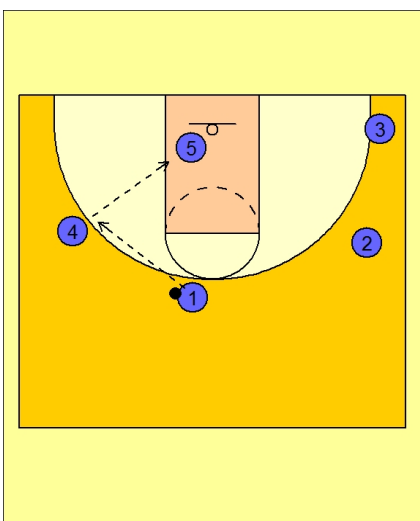


#### St. Joe's Set Play vs. Man

#5 and #4 now set a double staggered ball screen on top for #1.

#5 cuts hard to the basket when #1 comes off the screen. #4 will look to "pick and pop" to the left wing area.

#1 will look to score or dump the ball down to #5 in the lane or perhaps kick out to #2 or #3.



#### St. Joe's Set Play vs. Man

#1 also has the option to pass back to #4 on the left wing. This move is especially effective when #1 notices that #5 has been fronted on his initial cut into the lane.

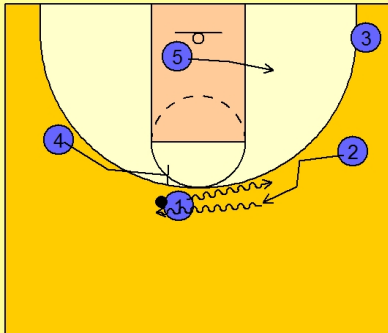
With quick ball reversal to #4, #5 may have the opportunity to seal his man in the lane to receive the pass from #4.



**St. Joe's Set Play vs. Man**

#1 may also elect to dribble hand-off with #2 on the right wing.

#4 recognizes this and sprints to the top and sets a ball screen for #2 coming off the hand-off from #1.



**St. Joe's Set Play vs. Man**

#2 looks to score off the hand-off or will look for #4 screening down for #5 and sealing in the lane.

#2 can also look to use the "high / low" entry to #4 through #5 on top.

