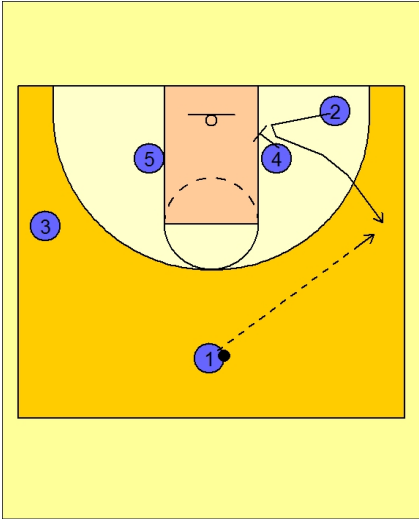


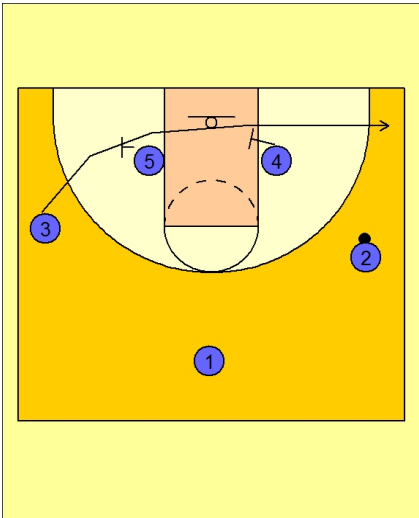


Set play vs. man (15)



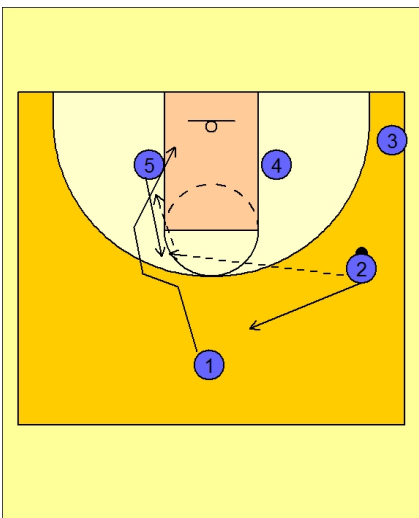
St. Joe's Set Play vs. Man

#4 screens in for #2 cutting out to the right wing to receive the entry pass from #1.



St. Joe's Set Play vs. Man

Once #2 has the ball, #5 and #4 set screens for #3 along the baseline.



St. Joe's Set Play vs. Man

If #3 is not open for a shot in the corner, the backside of the floor has been cleared out for what they are really looking for on this play.

#2 hits #5 flashing into the high post while #1 makes a good, hard back door cut looking for the pass from #5.

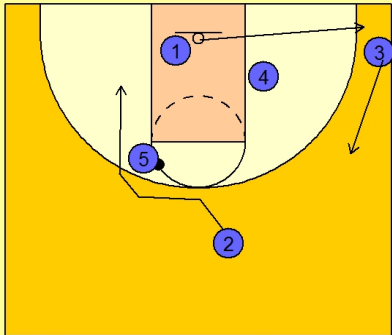
#2 cuts to the top after passing to #5.



St. Joe's Set Play vs. Man

If #1 did not get the back door pass from #5, #2 is not cutting behind #1 looking for the same hand-off or back door pass from #5.

#1 continues his cut to the corner while #3 slides up to the right wing.



St. Joe's Set Play vs. Man

If #2 does not get the ball, #5 executes a dribble hand-off with #3.

#3 looks to get into the lane and score.

