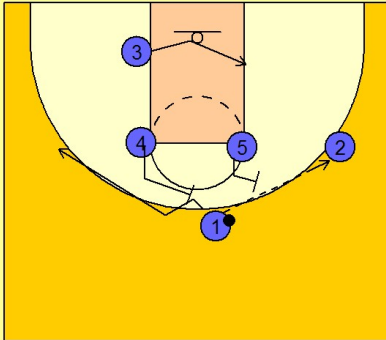


St. joes

Set play vs. man (10)

1

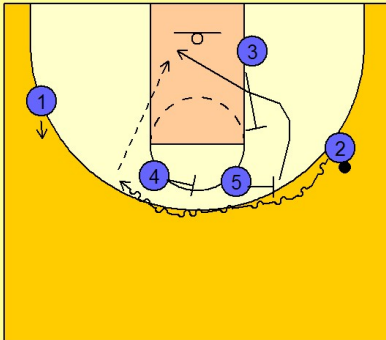
St. Joe's Set Play vs. Man



#1 enters to #2 on the right wing. #5 steps out to get in position for a ball screen for #2. #1 fades to the back side of the floor off the back screen from #4. #3 cuts to ball side low block.

2

St. Joe's Set Play vs. Man



#2 now uses a double ball screen from #4 and #5 on the top of the key. As #2 drives over the top, #5 rolls to the basket off of a back screen from #3. #2 looks to hit #5 on the low block.