

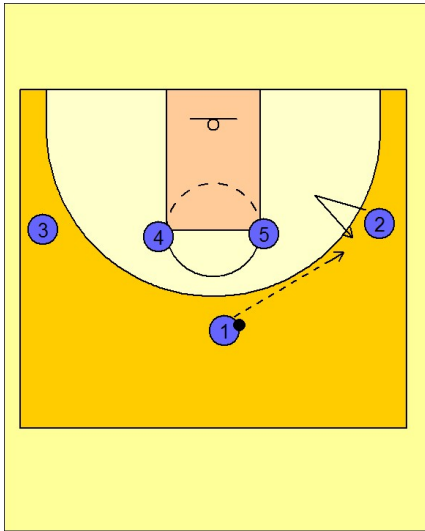
St. joes

Set play vs. man (3)

1

St. Joe's Set Play vs. Man

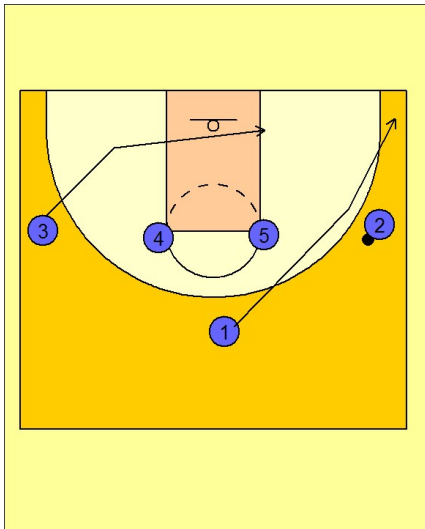
1 - 4 high alignment. #2 breaks in and out to get an entry pass from #1.



2

St. Joe's Set Play vs. Man

After passing to #2, #1 clears out to the ball side corner. #3 breaks to the ball side block.



3

St. Joe's Set Play vs. Man

#4 and #5 move over to set a staggered ball screen for #2 who takes the ball across the top of the key looking for an open shot or penetration opportunity.

After screening on the ball, #4 breaks to the ball side block for a pass from #2 while #5 sets a down screen for #3. #2 can look to hit #3 on top if he is open for the shot.

