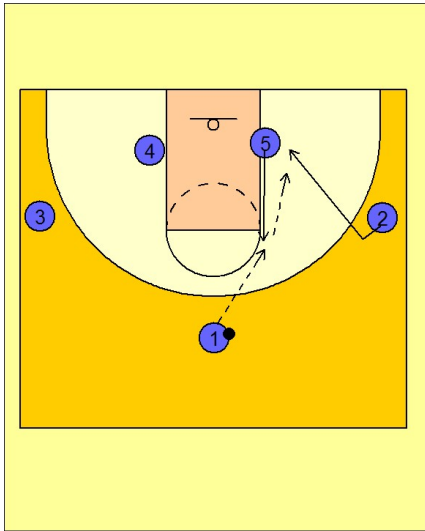


St. joes

Set play vs. man (4)

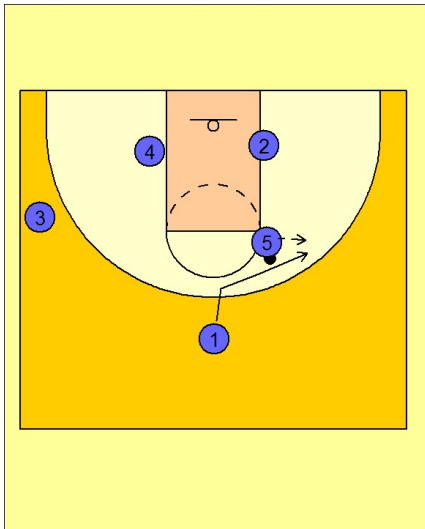
1



St. Joe's Set Play vs. Man

#5 flashes to the high post getting an entry pass from #1. #2 sets his man up and breaks back door looking for a pass from #5 for the layup.

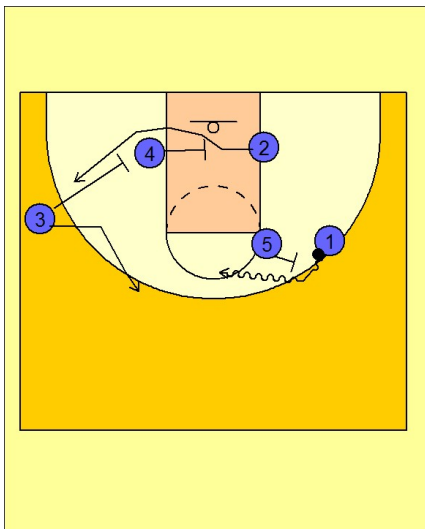
2



St. Joe's Set Play vs. Man

If #2 is not open for the layup, #1 breaks over the top of #5 and gets the ball back from him.

3



St. Joe's Set Play vs. Man

#1 and #5 now execute a pick and roll from the wing. #4 sets a screen for #2 breaking out to the opposite wing area. #3 could set another down screen for #2 or break to the top.