

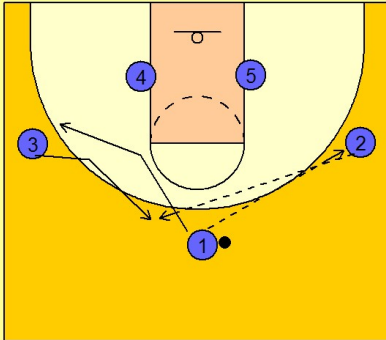
St. joes

Set play vs. man (5)

1

St. Joe's Set Play vs. Man

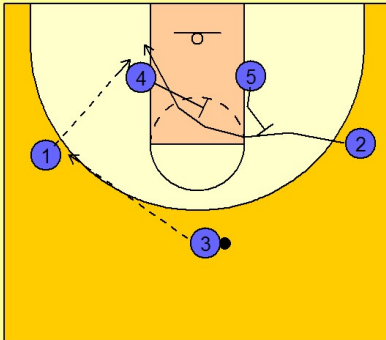
3 out 2 in alignment. #1 enters to #2 on the wing and clears out to the opposite wing area. #3 breaks down and out to the top of the key to receive the pass from #2.



2

St. Joe's Set Play vs. Man

Once #3 has the ball he looks to reverse the ball to #1 on the opposite wing. While he is doing this, #5 and #4 set staggered back screens for #2 bringing him to the block for a potential pass from #1.



3

St. Joe's Set Play vs. Man

If he is not open, he continues out to the ball side corner area. #1 then puts the ball down towards the top of the key area while #5 sets a back screen for #3 fading to the opposite wing. #1 can look to hit #3 for a shot or he can turn the dribble towards the lane looking for a shot or drive and kick opportunity.

