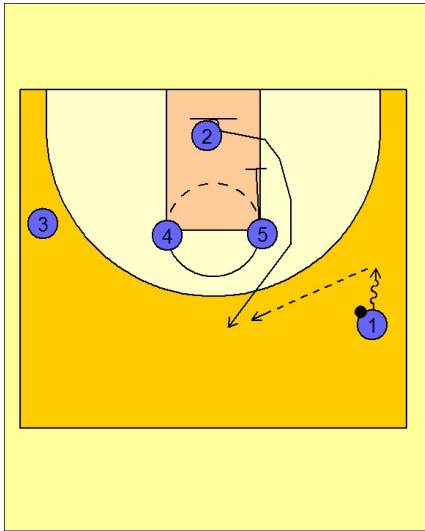


# St. joes

## Set play vs. man (6)

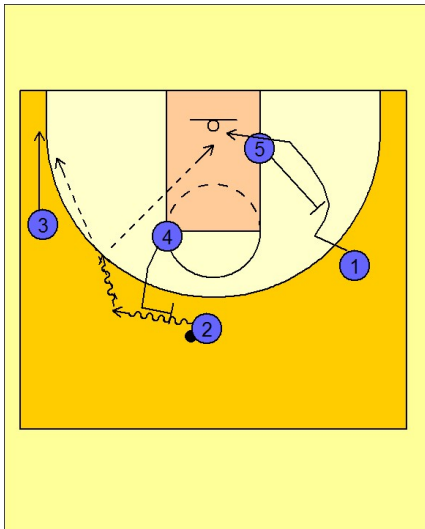
1



St. Joe's Set Play vs. Man Defense

#5 down screens for #2 who is underneath the basket. #2 comes up the right side near the FT line elbow to the top of the key and gets the entry pass from #1.

2



St. Joe's Set Play vs. Man Defense

Once #2 has the ball, #4 steps out and sets a ball screen.

As #2 comes off the ball screen from #4, #3 fades to the corner for the spot up jumper while #5 steps out and back screens #1 for the lob.