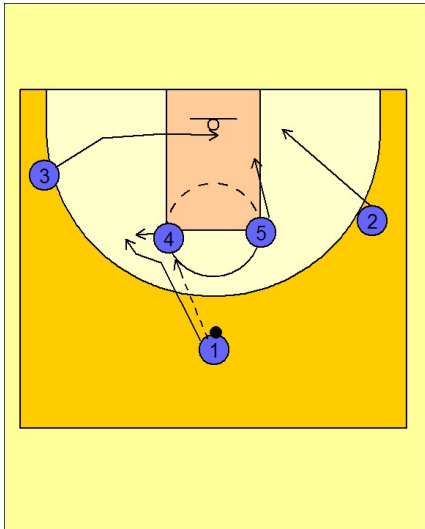


St. joes

Set play vs. man (7)

1



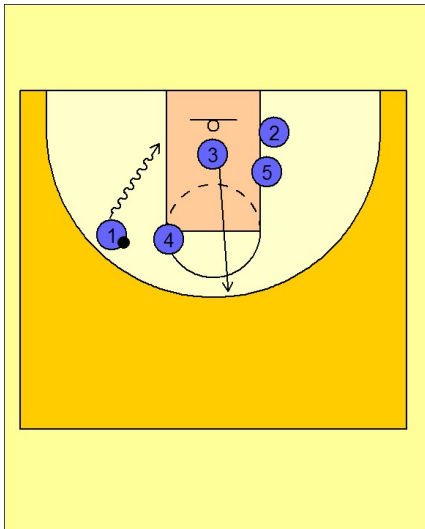
St. Joe's Set Play vs. Man

1 - 4 high set to begin.

#1 enters to #4 while #3 clears out to the middle of the lane while #5 and #2 set up on the opposite low block area.

#1 cuts off of #4 looking for the hand off.

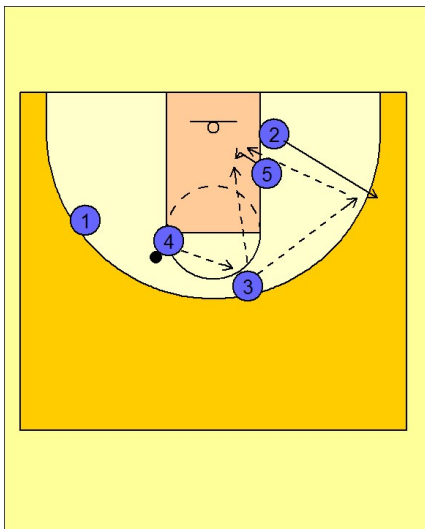
2



St. Joe's Set Play vs. Man

If #1 gets the ball from #4 he has the side cleared out to attack one on one. #3, after cutting through to the middle, cuts straight out on top.

3



St. Joe's Set Play vs. Man

If #1 does not get the ball, #4 hits #3 on top. #5 ducks into the lane while #2 breaks out to the wing area.

#3 will look to feed #5 directly in the post or throw it to #2 on the right wing for a better post entry angle into #5.

St. joes

Set play vs. man (7)

4

St. Joe's Set Play vs. Man

Once #2 has the ball and cannot enter it to #5, #5 steps out and runs a pick and roll with #2. #2 comes off the screen looking to score, hit #5 rolling, or drive and kick to either #3, #4 or #1.

