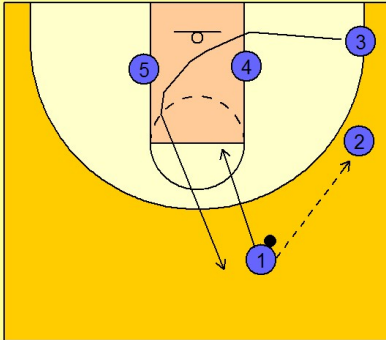


St. joes

Set play vs. man (9)

1

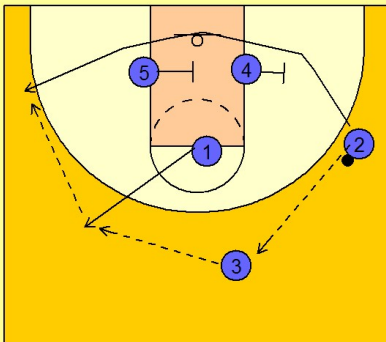
St. Joe's Set Play vs. Man Defense



#1 enters to #2 on the right wing and cuts to the FT line area. #3 cuts under the basket and straight out to the top of the key area replacing the spot #1 just vacated.

2

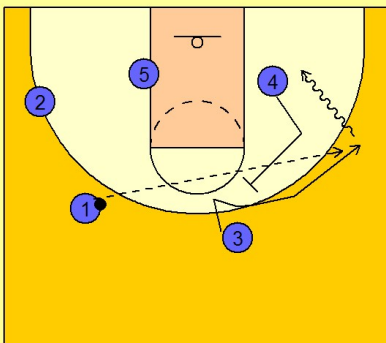
St. Joe's Set Play vs. Man Defense



#2 passes to #3 on top. #1 cuts out to the top of the key to receive the next pass from #3. #2 then uses two screens along the baseline from #4 and #5. #1 will look to hit #2 on the left wing if he is open.

3

St. Joe's Set Play vs. Man Defense



If #2 is not open, #4 is back screening for #3 to fade to the right wing area for a skip pass and potential open jumper or drive.