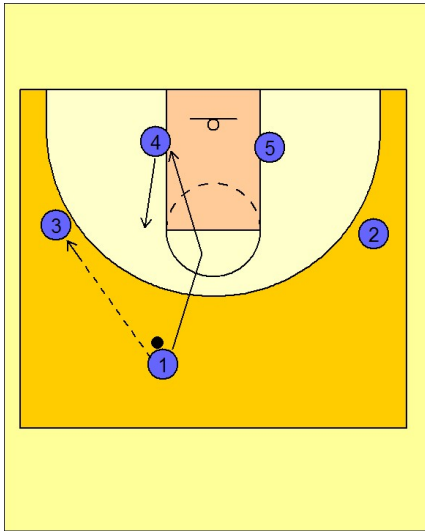


# Syracuse

## Early offense (1)

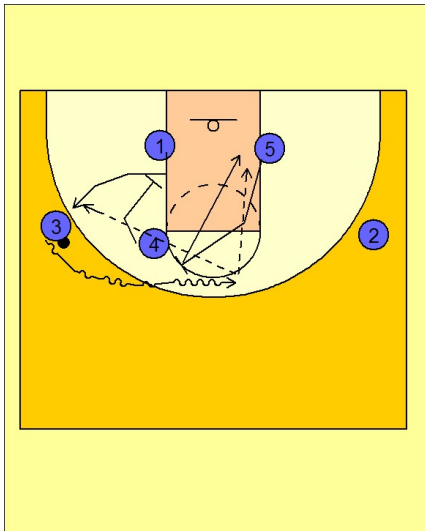
1



Syracuse Early Offense

#1 enters to #3 on the left wing and cuts through to the ball side low block. #4 moves up the lane to the left side ft line elbow.

2



Syracuse Early Offense

As #3 puts the ball on the floor towards the top of they key, #4 moves down to set a down screen for #1 while #5 moves up to execute and screen and roll with #3 on top.

#3 can look to score right from the screen on top, or he can look to hit #1 coming off the down screen or #5 rolling to the basket.