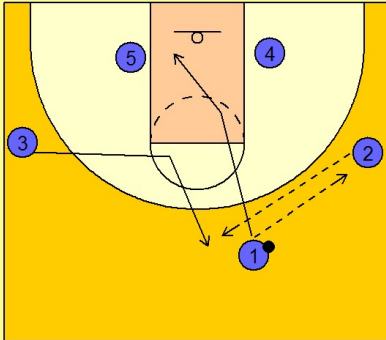


# Syracuse

## Early offense (2)

1

### Syracuse Early Offense

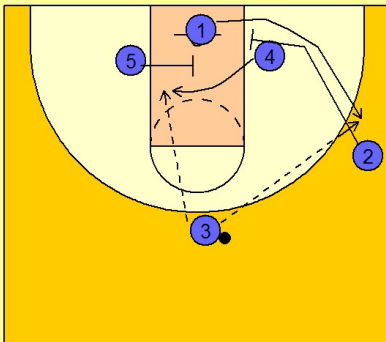


#1 enters to #2 on the right wing and cuts through down underneath the basket.

#2 quickly passes to #3 cutting into the ft line area and out to the top of the key.

2

### Syracuse Early Offense



Once #3 has the ball, #5 screens across in the lane for #4 cutting over the top looking for the post entry pass from #3 on top.

At the same time, #2 is down screening for #1 who is breaking out to the right wing area. If #4 is not open inside, #3 will look for #1 on the right wing for the open jump shot.