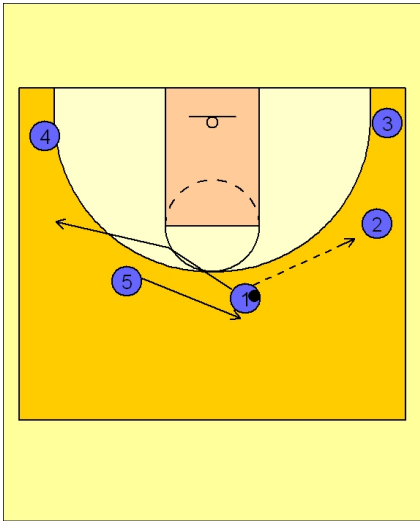




## Half ct. offense (1)

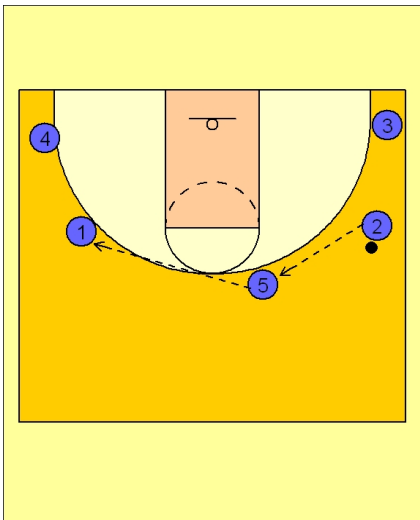


### Tennessee Women Half Ct. Offense vs. Man Defense

5 out on the perimeter to begin.

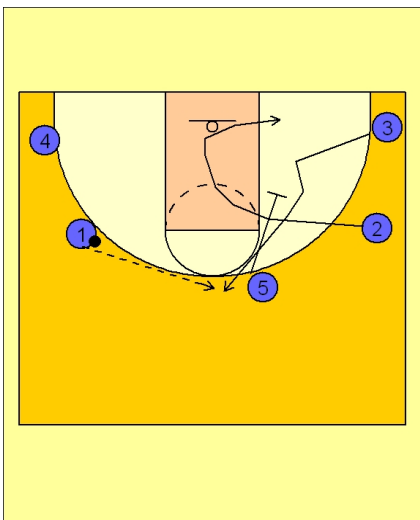
I believe Tennessee uses this offense as a bit of a delay game with wide spacing, hoping to force some overplays and open cutting opportunities or perhaps a driving opportunity.

#1 enters to #2 on the right wing. #1 cuts away to the opposite wing while #5 replaces #1.



### Tennessee Women Half Ct. Offense vs. Man Defense

#2 passes to #5 on top who reverses the ball across the top to #1 on the left wing.



### Tennessee Women Half Ct. Offense vs. Man Defense

#2 cuts first into the lane with #5 following right behind to set a down screen for #3 in the right corner. #2 cuts first....#2 does not cut off the back of #5 as you might think in this diagram.

#2 is cutting first in the lane with the down screen and cut to the top from #3 to follow.

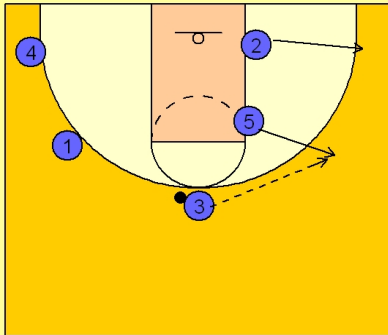
#2 will loop back to the same side of the floor she started on near the low block area. #1 will look to hit #2 cutting first and then will enter the ball to #3 on top.



**Tennessee Women Half Ct. Offense vs. Man Defense**

After cutting and screening, #5 and #2 break straight out to their respective spots on in the corner and on the wing.

#3 will look to enter the ball to #5 on the right wing.

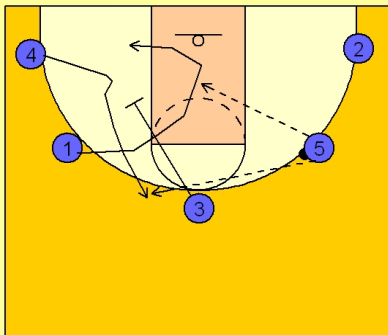


**Tennessee Women Half Ct. Offense vs. Man Defense**

The same action is now repeated on the left side of the floor.

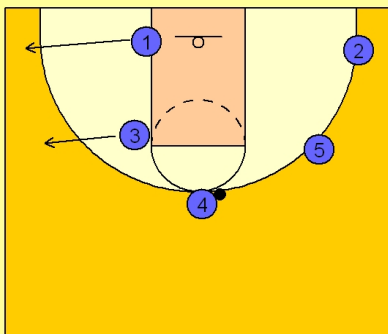
#1 cuts through the lane and then back to the left low block area while #3 follows quickly behind with a down screen for #4 in the left corner area.

#4 breaks to the top looking for the pass from #5.



**Tennessee Women Half Ct. Offense vs. Man Defense**

#1 and #3 now break out to their respective corner and wing areas of the floor.





**Tennessee Women Half Ct. Offense vs. Man Defense**

#4 enters the ball to #3 on the left wing and the same action is now repeated on the right side of the floor.

