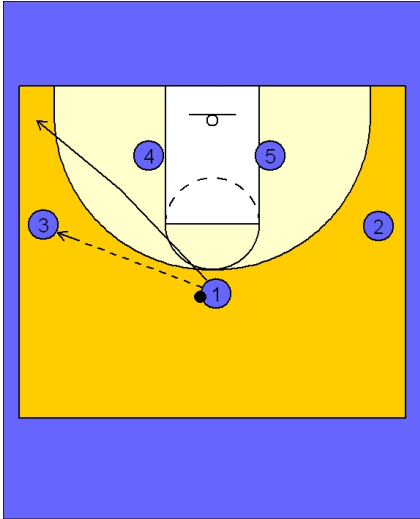




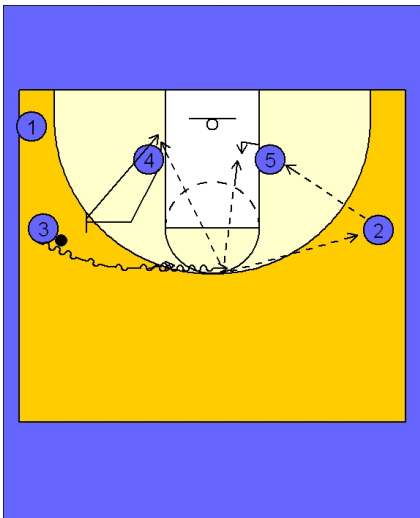
Half ct. offense (2)



Tennessee Women Half Ct. Offense vs. Man Defense

3 out 2 in alignment.

#1 enters to either wing player. Here we see #1 passing to #3 on the left wing and cuts to the ball side corner.

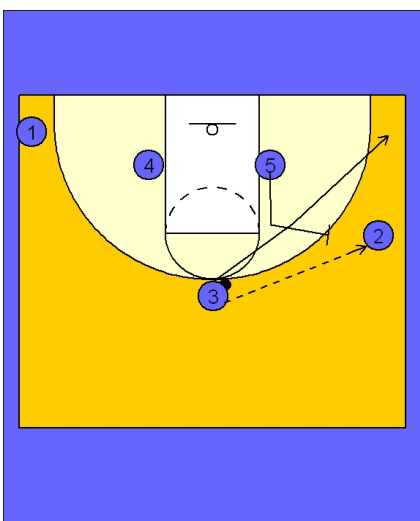


Tennessee Women Half Ct. Offense vs. Man Defense

As #1 is cutting through, #4 on the ball side block is moving up to set a ball screen for #3 on the left wing area.

#3 comes off the ball screen looking to score, dump to #4 rolling to the basket, or pass inside to #5 ducking in the lane.

If #2 has a better angle to the post, #3 will pass to the right wing #2 who will look to feed the post player #5.



Tennessee Women Half Ct. Offense vs. Man Defense

Once #3 passes the ball to #2 on the right wing, #3 will cut through to the ball side corner and the offense will continue as in the beginning.

#5 steps out to ball screen for #2.



Tennessee Women Half Ct. Offense vs. Man Defense

2 dribbles off the ball screen from #5 with #5 rolling to the basket and the continuity continues.

