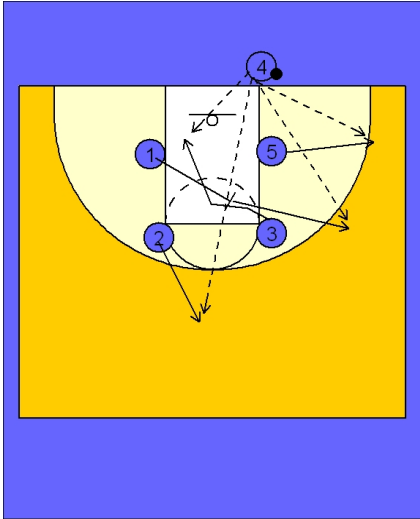




Ob under vs. man (5)



Tennessee Women OB Under vs. Man

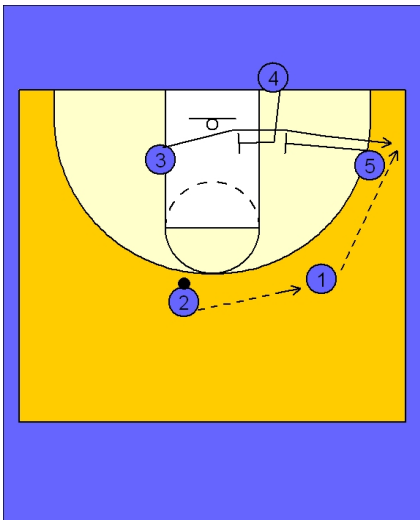
Box set to begin.

#5 breaks out to the ball side corner area.

#1 sets a back screen for #3 and then pops out to the right wing area.

#3 cuts off the back screen looking for the ball from #4.

#2 breaks straight out looking for the safety valve entry.



Tennessee Women OB Under vs. Man

Once the ball gets inbounded, #4 will step and set a double staggered screen for #3 breaking to the right corner area.

#1 looks to hit #3 if she is open. If not, she will center the ball and begin a new offensive set or half court series.