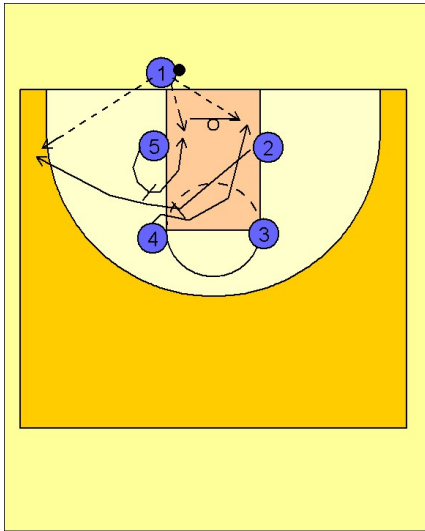


Tennessee women Ob under vs. man (2)

1



Tennessee Women OB Under vs. Man

Box set to begin.

#2 sets a diagonal backscreen for #4. #1's first look is #4 cutting to the basket off this backscreen.

#5 then moves up and "screens the screener" #2, who breaks to the corner looking for the next scoring option.

#5 then rolls to the basket after #2 comes off of her screen. #5 may be open if #5's defender helps on the screening action and cut to the corner by #2.