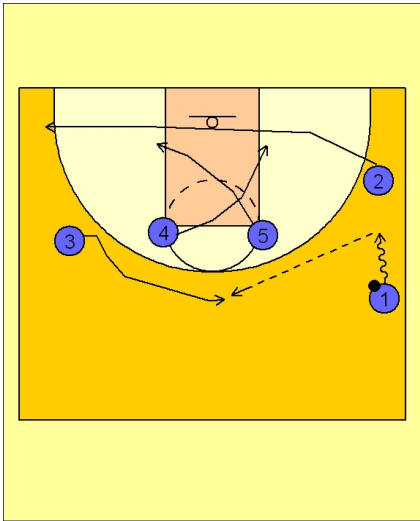




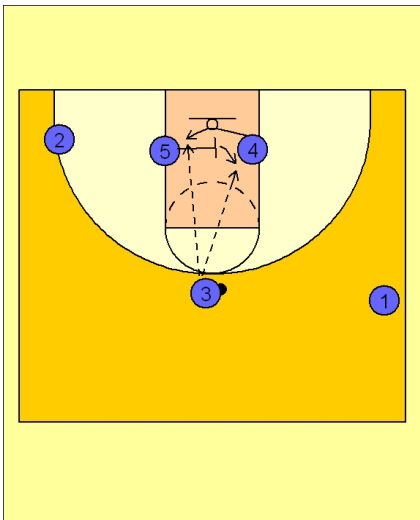
Quick hitter (6)



Tennessee Women Quick Hitter

#1 drives the ball up the sideline. #2 clears out to the opposite side of the floor while #3 cuts to the top of the key to receive the pass from #1.

#5 and #4 "x cut" down the lane.



Tennessee Women Quick Hitter

Once #3 has the ball, #5 screens in the lane for #4. #4 will cut under the screen and look for the post entry pass from #3 on top. #5, after screening, will look to seal her defender in the lane and look for the post entry pass from #3.