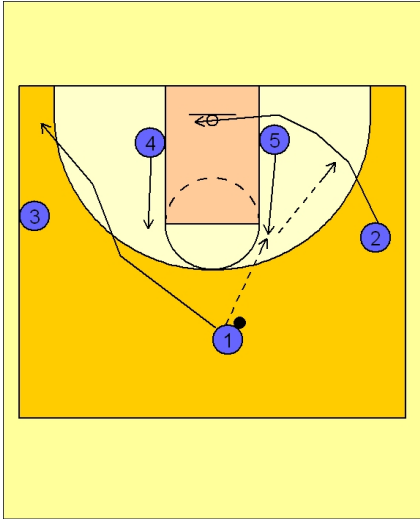




Quick hitter (7)



Tennessee Women Quick Hitter

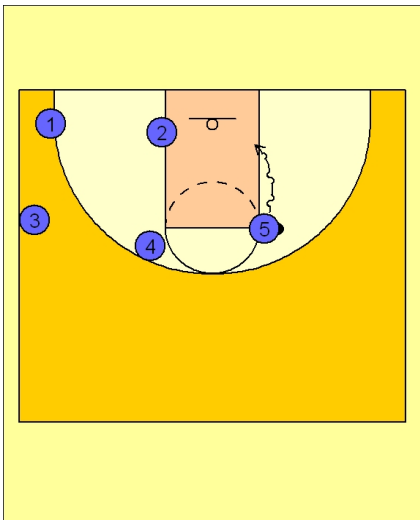
3 out / 2 in set to begin.

#4 and #5 flash to the high post. #1 has the option to enter the ball to either high post player.

Here we see #1 enter the ball to #5.

#1 clears out to the opposite corner area.

#2 cuts back door and may receive the pass from #5.



Tennessee Women Quick Hitter

Now the right side of the floor is cleared out for #5 to attack the basket on the dribble.