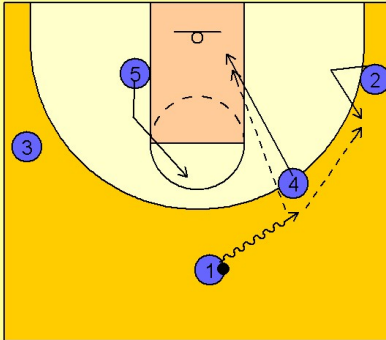


# Tennessee women

## Quick hitter (1)

1

### Tennessee Women Quick Hitter

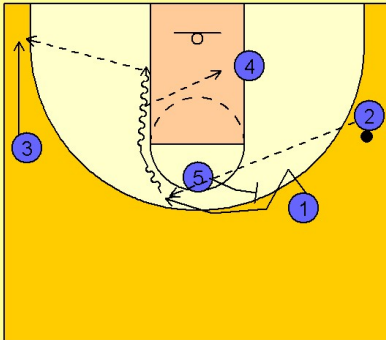


#1 dribble enters the ball to the right wing. #4 cuts backdoor and looks for the pass from #1. If #4 does not receive the ball, #2 will get the pass on the right wing.

#5 is flashing to the high post as #1 is dribbling to the right wing area.

2

### Tennessee Women Set Play vs. Man Defense



Once #2 has the ball, #5 sets a backscreen for #1 who cuts over the top and looks for the skip pass from #2.

Once #1 has the ball, she looks to score off the catch, drive in the lane to score, or drive and kick out to #3 on the left corner / wing area or dump the ball inside to #4, depending on the defender that comes to help on penetration.