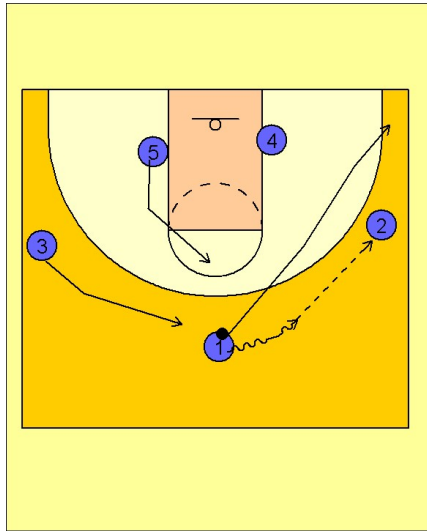


Tennessee women

Quick hitter (4)

1

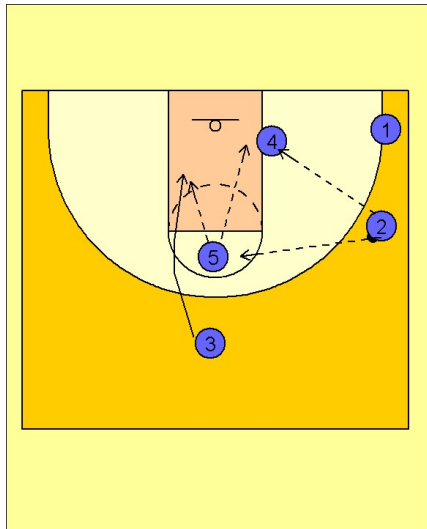


Tennessee Women Quick Hitter

#1 dribbles at #2 on the right wing and makes the entry pass. #1 then cuts to the ballside corner area.

#5 flashes to the high post while #3 cuts to the top of the key area.

2



Tennessee Women Quick Hitter

From here Tennessee has a couple of quick hitting options.

#2 can look to feed the post either directly or by passing to #5 in the high post who will then look to make the high / low entry pass to #4.

On the pass to #5, #3 will also cut backdoor and look for the pass from #5 as she cuts down the lane.