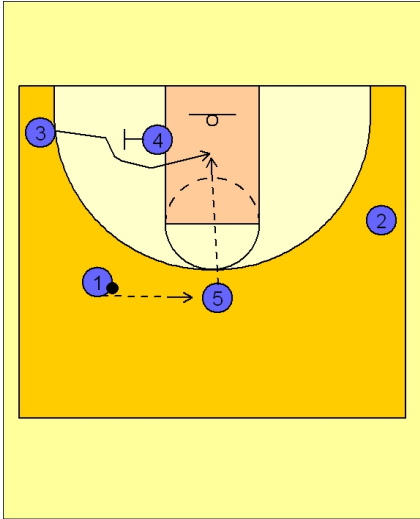




Set play (10)

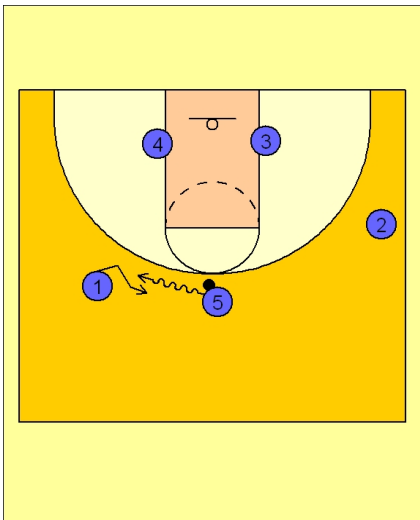


Tennessee Women Set Play vs. Man Defense

Play starts with #1 passing to #5 on top.

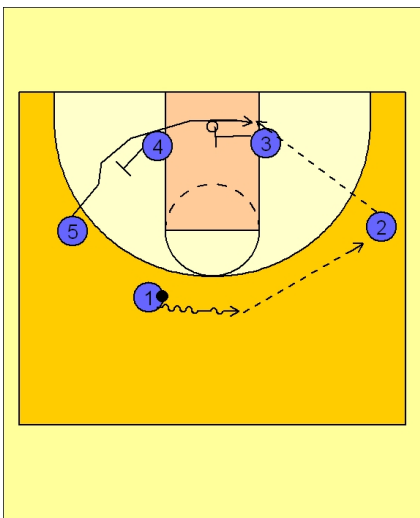
#3 cuts over the back screen from #4 on the left low block.

If #3 is open, #5 will make the pass in the lane to #3.



Tennessee Women Set Play vs. Man Defense

If #3 does not receive the ball, #5 will execute a dribble hand off with #1 to the left of her.



Tennessee Women Set Play vs. Man Defense

#1 will take the ball on the dribble to the right side of the floor while #4 and #3 set back screens for #5.

#5 cuts to the right low block area off the double staggered back screen and looks to receive the pass from #2.