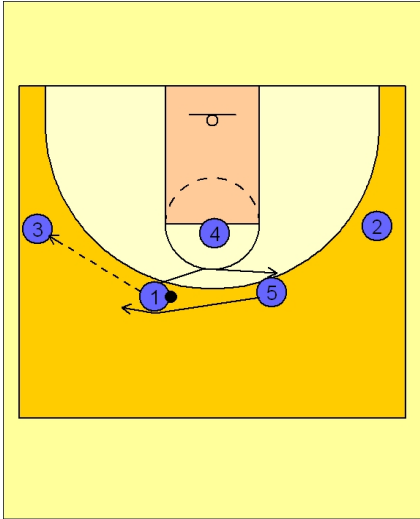


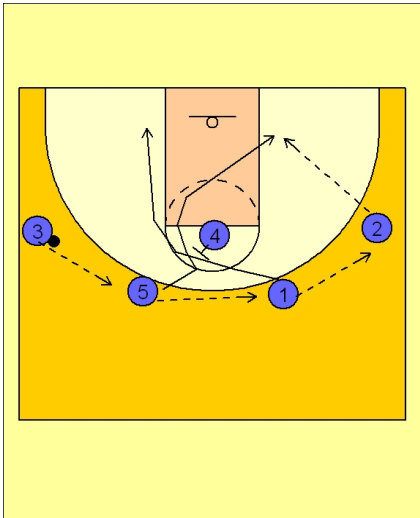


### Set play (11)



#### Tennessee Women Set Play vs. Man Defense

#1 enters to #3 on the left wing and exchanges spots with #5.

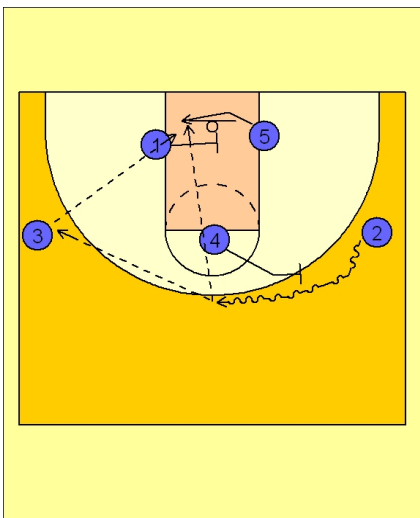


#### Tennessee Women Set Play vs. Man Defense

#3 now passes to #5 who passes to #1 who passes to #2 on the right wing.

As #5 passes to #1, she will cut off of a back screen from #4 at the FT line. #1 will follow behind her to the opposite low block area.

#2 will look to feed #5 in the post if she is open.



#### Tennessee Women Set Play vs. Man Defense

If #5 does not receive the ball, #4 sets a ball screen for #2. #2 comes over the top of the screen while #1 moves across the lane and sets a screen for #5.

#2 will look to feed the post directly from the top if she has the angle or she will pass to #3 on the left wing who will then look to feed #5 inside.