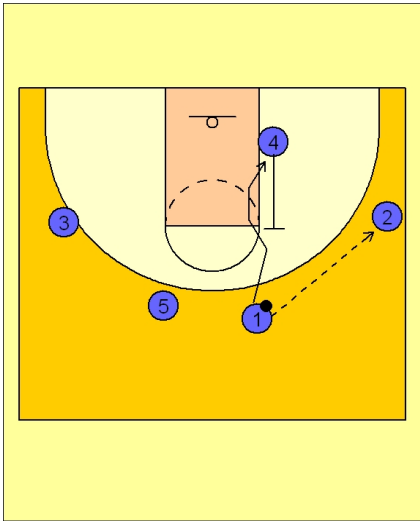




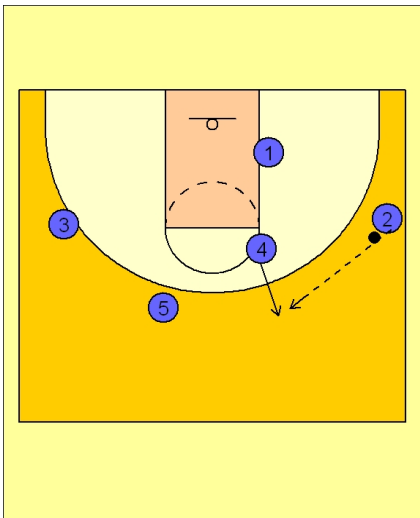
Set play (12)



Tennessee Women Set Play vs. Man Defense

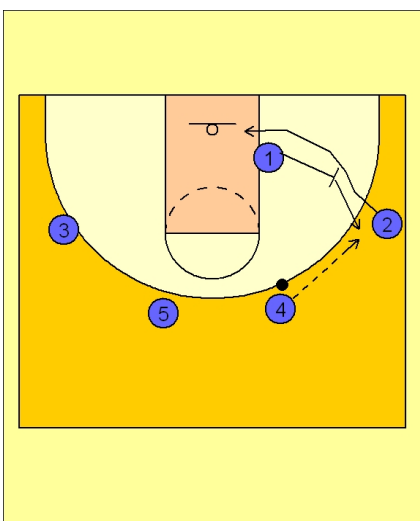
4 out 1 in to begin.

#1 enters the ball to #2 on the right wing and executes a "ucla cut" to the low block off the back screen from #4.



Tennessee Women Set Play vs. Man Defense

#4 now steps out after screening and receives the pass from #2.



Tennessee Women Set Play vs. Man Defense

As soon as #2 passes to #4 on top, #1 back screens for #2 on the right wing. #2 cuts to the basket and may get the pass from #4 if she is open, although this is not what they are really looking for on this play.



Tennessee Women Set Play vs. Man Defense

Once #2 cuts in the lane, she immediately changes her direction and cuts up the lane diagonally to set a back screen for #5.

#1 looks to hit #5 isolated on the right low block area.

