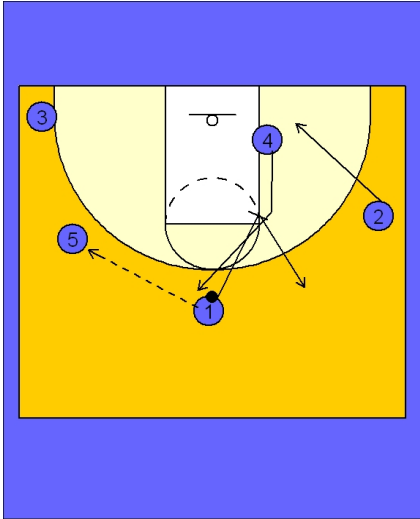




Set play (13)

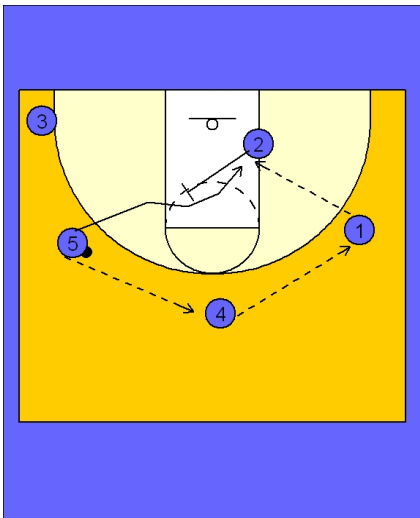


Tennessee Women Set Play vs. Man Defense

In this set you want to have your player you would like to isolate on the block in #5's position.

Here #1 enters to #5 on the left wing and screens down for #4 at the elbow area. #4 breaks out to the top of the key area.

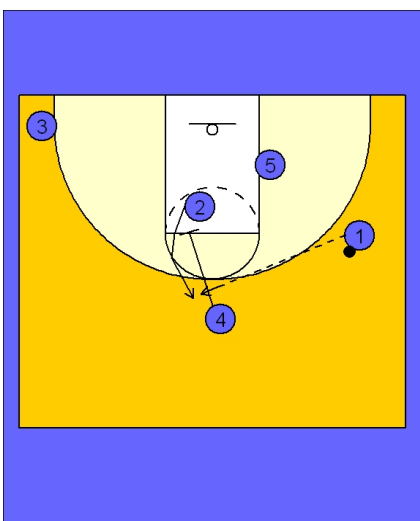
#2 is cutting down to the right low block area as this screening action is taking place.



Tennessee Women Set Play vs. Man Defense

#5 now reverses the ball to #4 on top who then passes to #1 on the right wing.

As the ball is being reversed, #2 sets a diagonal back screen for #5 who cuts to the ball side low block.



Tennessee Women Set Play vs. Man Defense

If #5 does not receive the ball, #4 is "screening the screener" by setting a down screen for #2.

#1 will look to pass the ball on top to #2 if she is open for the shot.



Tennessee Women Set Play vs. Man Defense

Tennessee is now in a 3 out 2 in alignment and can finish up with there motion offense looking to get the ball inside or run a quick hitting set if time.

