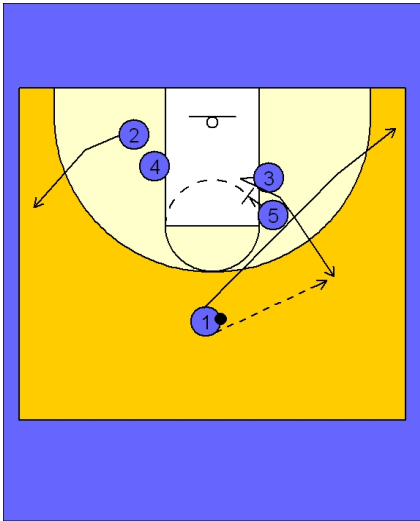




Set play (14)



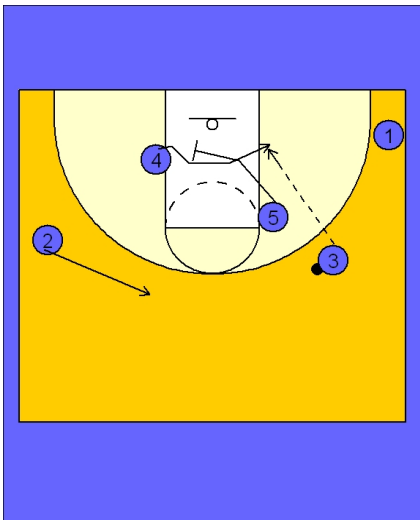
Tennessee Women Set Play vs. Man Defense

A double stack alignment at the elbow and opposite low block area.

#5 screens in and allows #3 to pop out and receive the entry pass on the right wing area from #1.

#2 pops out to the opposite wing.

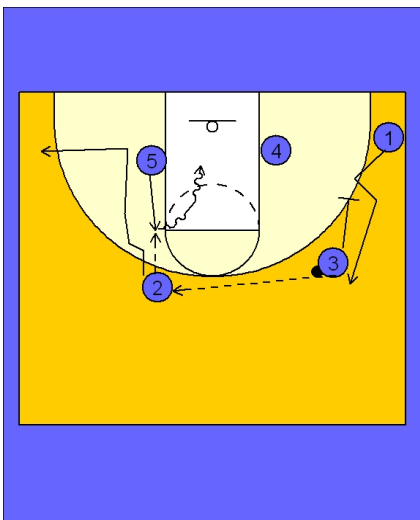
#1 passes to #3 and cuts to the ball side corner.



Tennessee Women Set Play vs. Man Defense

As soon as #1 cuts through, #5 sets a cross screen in the lane for #4. #4 cuts off the screen and looks for the post entry pass on the right block from #3.

#2 moves up on top for ball reversal.



Tennessee Women Set Play vs. Man Defense

If #4 does not receive the pass, #3 reverses the ball to #2 and then screens away for #1.

#5 flashes to the elbow area and looks to play a 2-man game with #5.

#2 can cut to the basket looking for the give and go pass back from #5. #5 can also look to turn and attack the basket.



Tennessee Women Set Play vs. Man Defense

Another option in this 2-man game alignment is for #5 to quickly step out and ball screen for #2.

