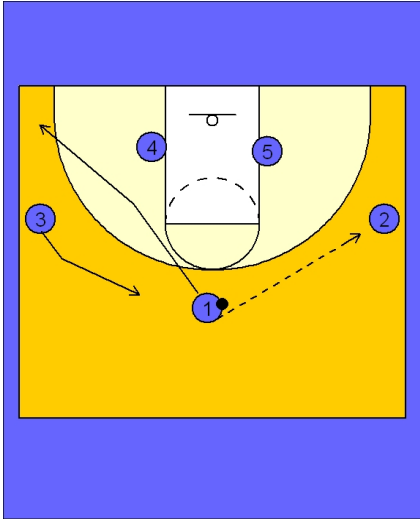




Set play (15)

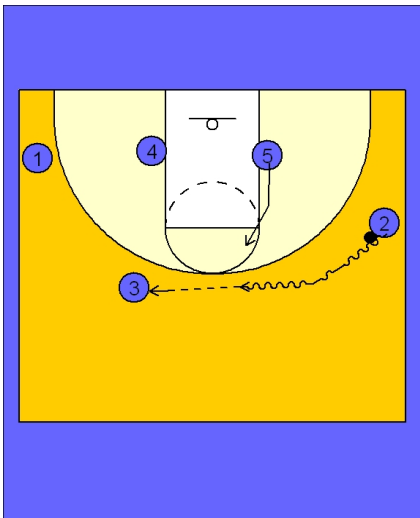


Tennessee Women Set Play vs. Man Defense

3 out 2 in alignment to begin.

#1 enters to either wing and cuts to the opposite corner. Here we see #1 passing to #2 on the right wing and then cuts to the left corner.

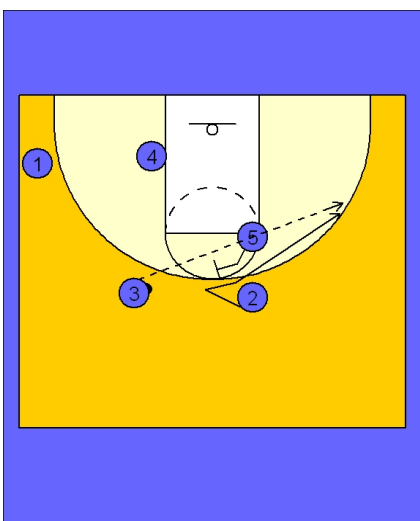
#3 moves up on the top left side of the floor.



Tennessee Women Set Play vs. Man Defense

Once #2 has the ball, she will penetrate towards the top center of the floor, towards #3. As this is happening, #5 is sliding up the lane near the right FT line elbow area.

#2 passes the ball over to #3.



Tennessee Women Set Play vs. Man Defense

As soon as #2 passed the ball, she takes a step forward to set up her defender and then uses a back screen from #5. #2 flairs to the right side of the floor looking for the skip pass over the top from #3.



Tennessee Women Set Play vs. Man Defense

If #2 does not have an open shot or penetration, #5 will either ball screen or slide down to the block and they will then be back in their 3 out 2 in alignment.

