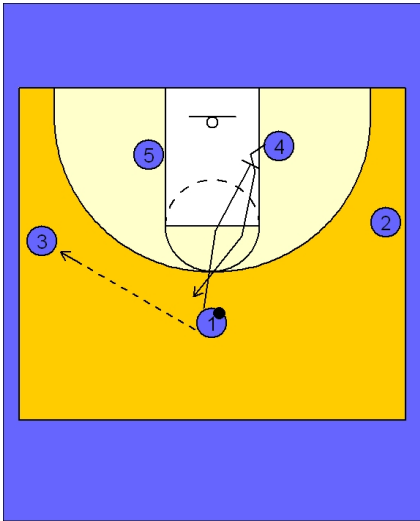




Set play (16)

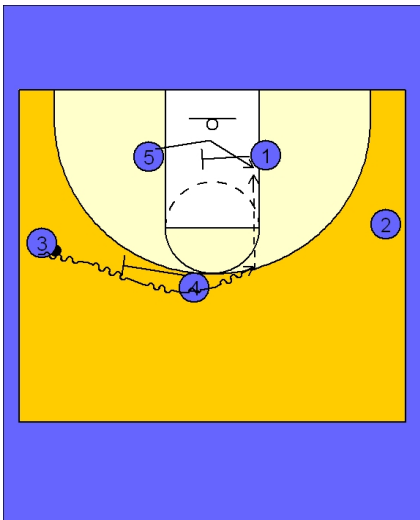


Tennessee Women Set Play vs. Man Defense

3 out 2 in alignment to begin.

#1 enters the ball to #3 on either wing. Here she passes to #3 on the left wing and cuts down to set a screen for #4.

#4 breaks up to the top of the key area.

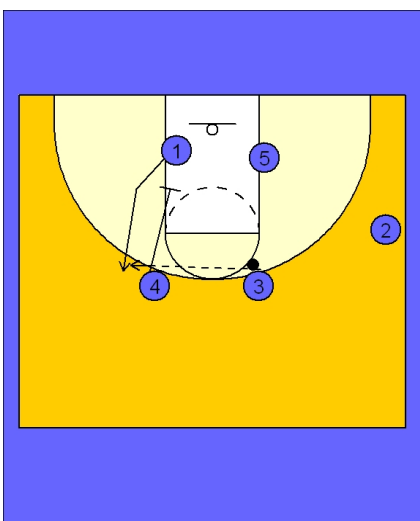


Tennessee Women Set Play vs. Man Defense

As soon as #4 gets near the top of the key area, she will quickly move over and set a ball screen for #3 on the left wing.

As #3 drives off the ball screen, #1 is setting a screen in the lane for #5.

#3 looks to feed #5 sealing inside if she is open.



Tennessee Women Set Play vs. Man Defense

If #3 does not get the ball inside to #5, she will now look for #1 coming out off the down screen from #4.