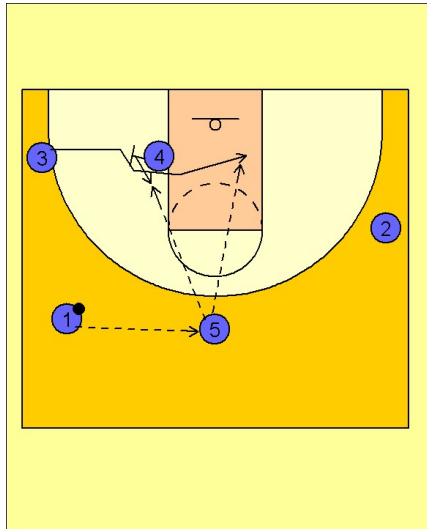


# Tennessee women

## Set play (1)

1

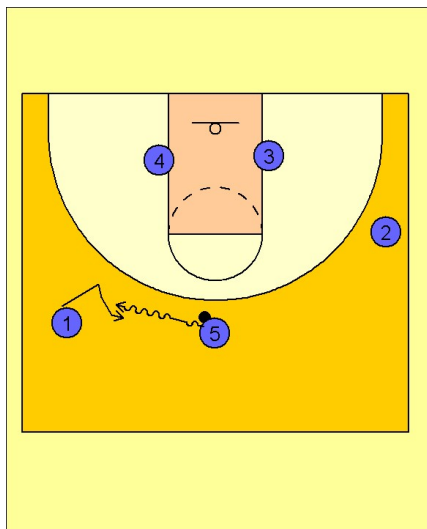


Tennessee Women Set Play vs. Man Defense

#1 passes to the #5 on top. As #5 catches the ball, #3 is cutting over the top of the screen from #4 on the left low block.

#5 will look inside quickly to #3 cutting across the lane or #4 stepping in the lane for the quick post entry pass.

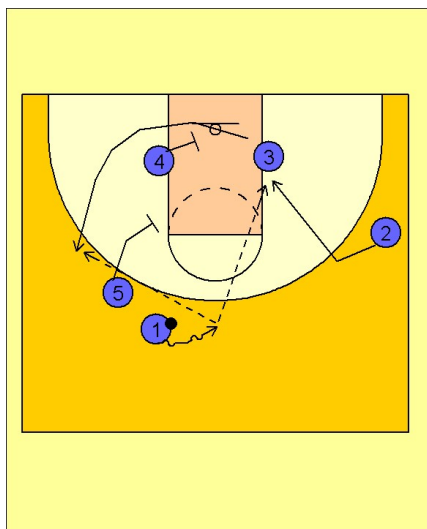
2



Tennessee Women Set Play vs. Man Defense

If those two options are not open, #5 executes a dribble handoff with #1 on the left wing. #1 takes the ball from #5.

3



Tennessee Women Set Play vs. Man Defense

#1 centers herself on top with a dribble or two while #3 comes off the double staggered screen on the left low block area.

#2 fakes at the dribbler #1 and then cuts backdoor to the cleared out basket area.