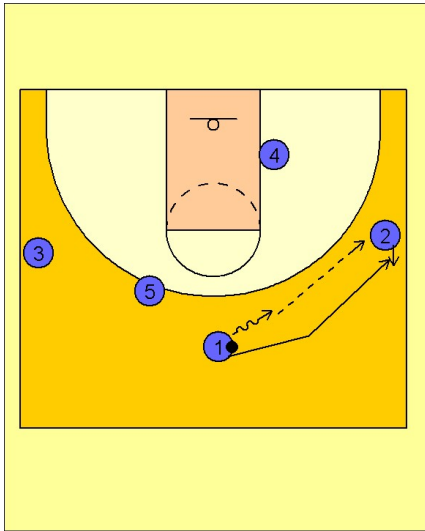


Tennessee women

Set play (2)

1

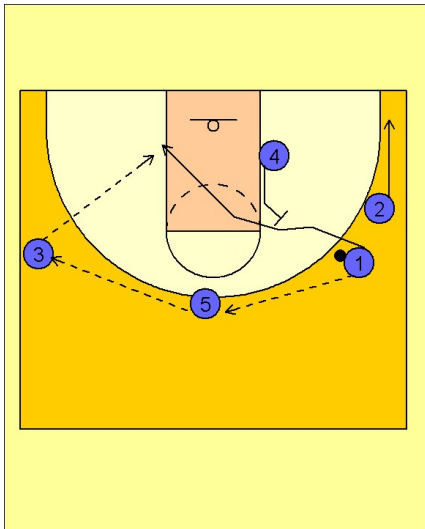
Tennessee Women Set Play vs. Man Defense



#1 dribbles at #2 on the right wing and then passes to #2 and goes and gets the ball back from #2.

2

Tennessee Women Set Play vs. Man Defense



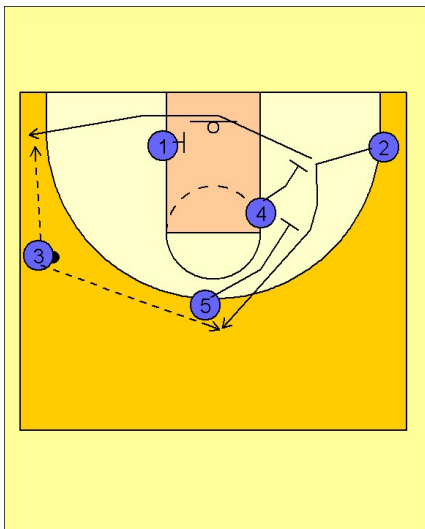
Once #2 gives the ball to #1, she flattens out to the ballside corner area.

#1 reverses the ball to #5 on top who then passes to #3 on the left wing.

#4 sets a backscreen for #1 who then cuts over the top and into the lane looking for the pass from #3.

3

Tennessee Women Set Play vs. Man Defense

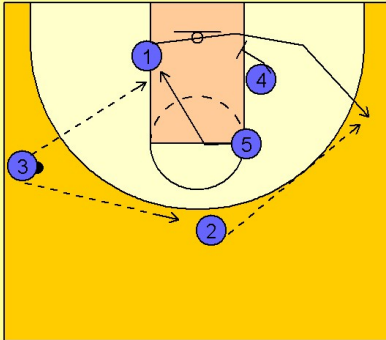


If #1 does not receive the pass, #4 and #5 set a double staggered screen for #2. #2 has the option of coming off high for the 3 pt. shot or faking the cut high and then cutting across the low block area off a screen from #1. #2 may then get a shot in the ballside corner area.

Set play (2)

4

Tennessee Women Set Play vs. Man Defense



If #2 cuts to the top, #1 would then cut back to the right side of the floor getting a screen from #4 on the right low block.

#5, after #2 came off her double staggered screen, would cut to the ballside low block area looking for the pass from #3.

If #2 has the ball, she would then look for #1 coming off the single screen from #4.