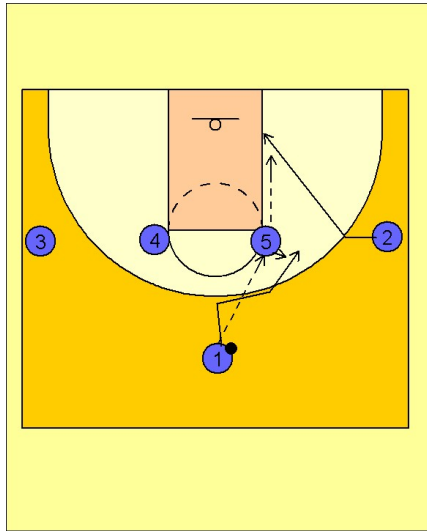


# Tennessee women

## Set play (3)

1



Tennessee Women Set Play vs. Man Defense

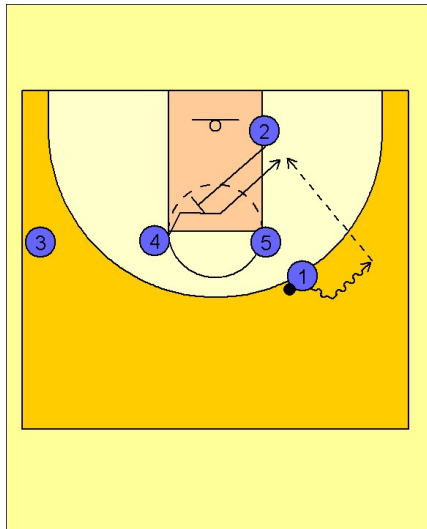
1 - 4 high set to begin.

#1 enters the ball to either post player. Here we see #5 receiving the entry pass.

#2 cuts backdoor and looks for the pass from #5.

#1 fakes away and then comes back to the ball and gets the pass back from #5.

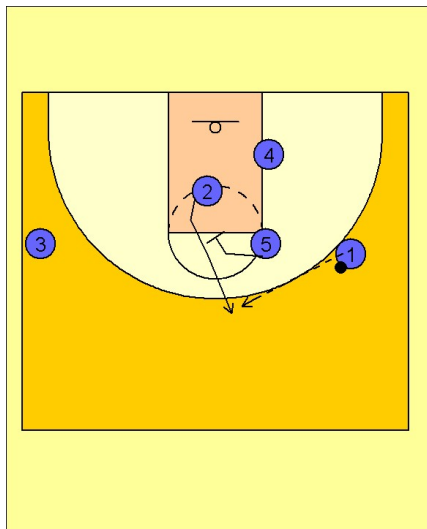
2



Tennessee Women Set Play vs. Man Defense

Once #1 has the ball, #2 sets a diagonal backscreen for #4. #1 puts the ball down to improve the passing angle inside to #4.

3



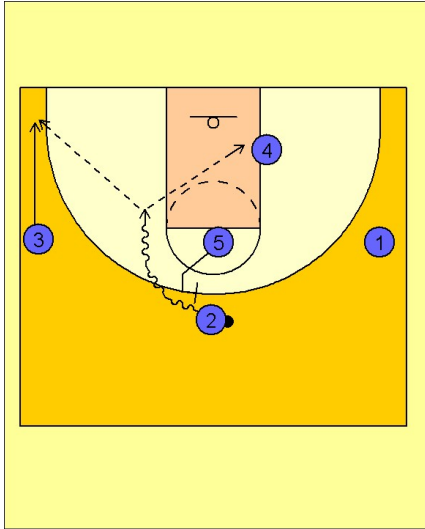
Tennessee Women Set Play vs. Man Defense

If #4 is not open, #5 sets a "screen for the screener" on #2. #2 breaks up to the top looking for the pass from #1.

# Tennessee women

## Set play (3)

4



### Tennessee Women Set Play vs. Man Defense

If #2 does not have a shot on the catch, #5 will step out and ballscreen for #2.

#2 will look to attack on the dribble to score in the lane, drive and kick out to #3 spotting up in the left corner area or dump the ball inside to #4, depending on the defender that helped on penetration.