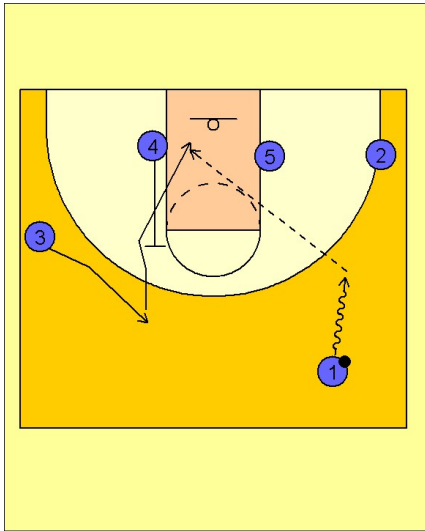


Tennessee women

Set play (4)

1



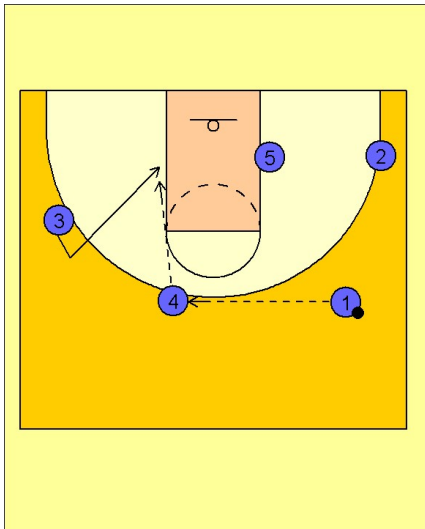
Tennessee Women Set Play vs. Man Defense

Similar beginning to this play as the "quick hitter 3" play.

This time, #4 tries to set a backscreen for #3 on the left top wing area.

If #3 uses the screen #1 will look to make the pass to #3 cutting to the basket.

2

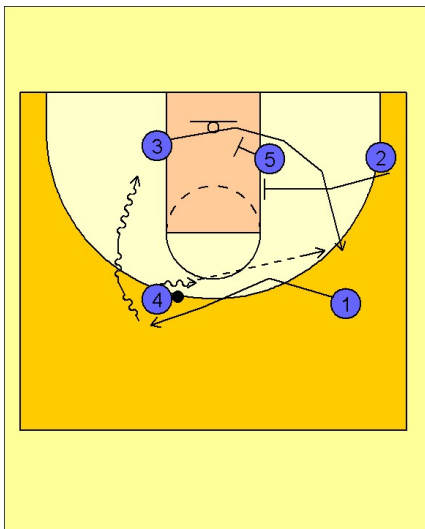


Tennessee Women Set Play vs. Man Defense

#3 may elect to break out to the left wing area while #4 steps out to receive the next pass from #1.

#4 would then look to make a pass to #3 on the left wing while #3 executes a backdoor cut.

3



Tennessee Women Set Play vs. Man Defense

If #3 does not receive the ball, #1 cuts over the top of #4 looking for the handoff.

If #1 receives the ball she will look to attack the cleared out lane area as #3 is leaving to come off the double screen from #5 and #2 on the right low block.

If #4 does not give the ball to #1 on the handoff, she will take a few dribbles towards the middle and look to find #3 open off the double screen.