

# Tennessee women

## Set play (5)

1

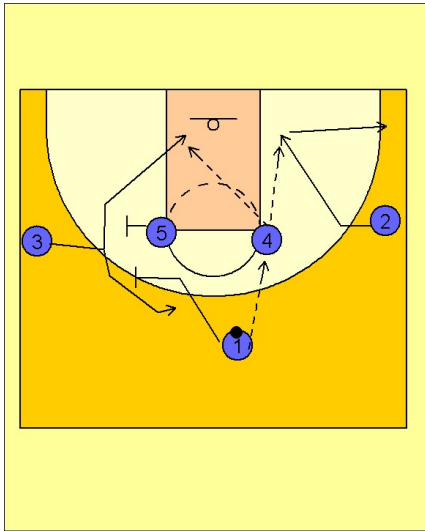
Tennessee Women Set Play vs. Man Defense

1 - 4 high set to begin.

#1 enters to #4 in the high post right elbow area while #2 cuts backdoor. #4 will look to make the backdoor pass to #2 if available. #2 will break out to the right corner area if she does not receive the ball.

At the same time, #1 and #5 are setting a double screen for #3 on the left wing.

#3 has the option to cut high or low off the double screen.



2

Tennessee Women Set Play vs. Man Defense

If #3 cuts high she will continue her cut and come over to receive a handoff from #4.

#3 will then take the ball and look to score off the dribble, kick out to #2 in the right wing, or dump the ball to #5 if her defender comes to help on penetration.

