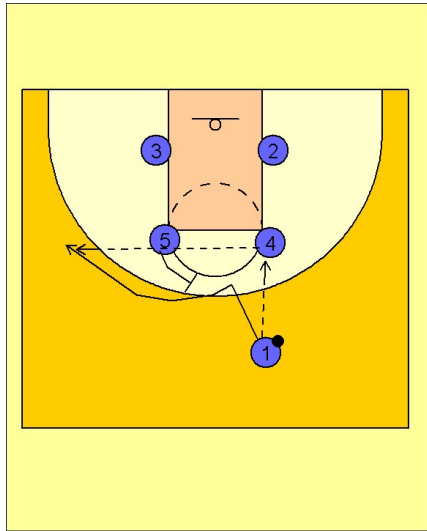


Tennessee women

Set play (6)

1

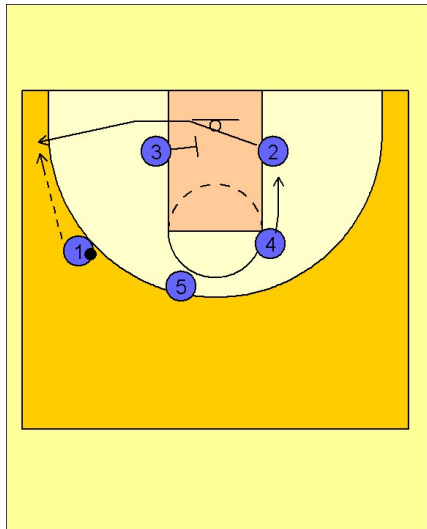


Tennessee Women Set Play vs. Man Defense

Box set to begin.

#1 enters the ball to #4. #5 steps out and backscreens for #1 who fades to the opposite wing. #4 makes the pass to #1 on the left wing.

2

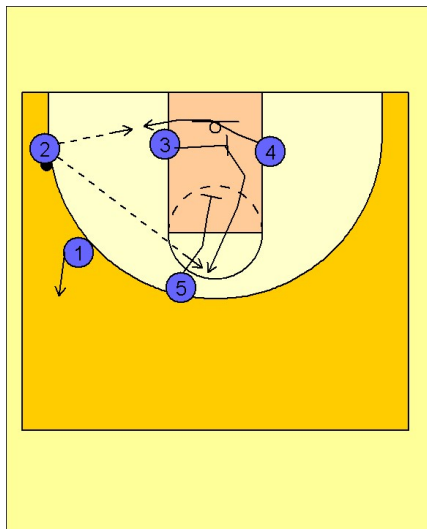


Tennessee Women Set Play vs. Man Defense

Once #1 has the ball, #3 screens for #2 breaking to the ballside corner for the potential open shot.

#4 moves down to take the place just vacated by #2.

3



Tennessee Women Set Play vs. Man Defense

Once #2 has the ball, #3 screens in the lane for #4. #4 cuts under the screen looking for good post position on the ballside low block.

If #4 is not open, #5 sets a downscreen in the lane for the screener, #3. #3 looks to get open near the top of the key for the jump shot or three point shot.