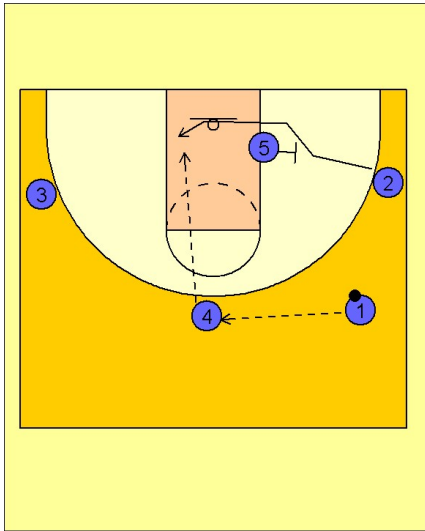


Tennessee women

Set play (8)

1

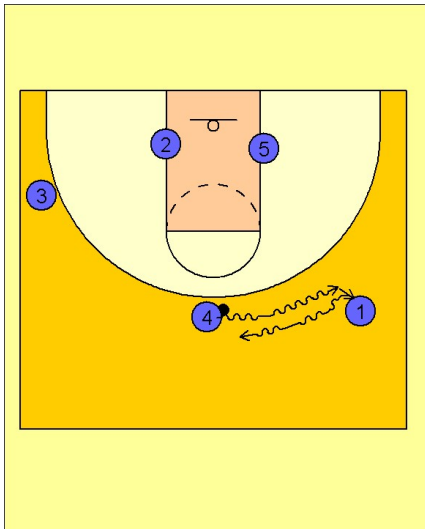


Tennessee Women Set Play vs. Man Defense

#1 passes to #4 on top while #2 on the right wing cuts under the basket off a backscreen from #5.

#4 can make the pass down low if #2 is open.

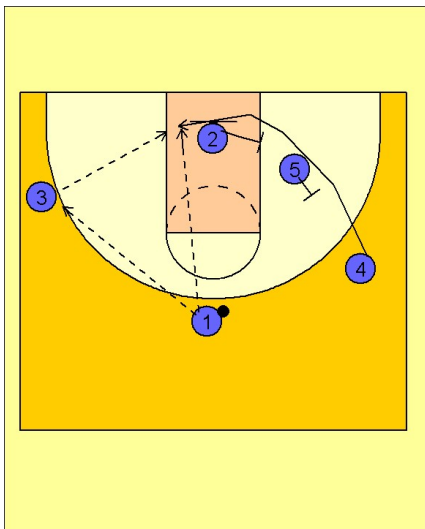
2



Tennessee Women Set Play vs. Man Defense

If #2 does not receive the ball, #4 executes a dribble handoff with #1 on the right wing. #1 takes the ball from #4 and centers the ball on top.

3



Tennessee Women Set Play vs. Man Defense

As #1 brings the ball to the center on top, #5 steps out to backscreen for #4 while #2 also comes across the lane and sets a backscreen for #4. #1 will look inside to #4 under the basket or can look to pass to the left wing player #3 for a better passing angle into the post.