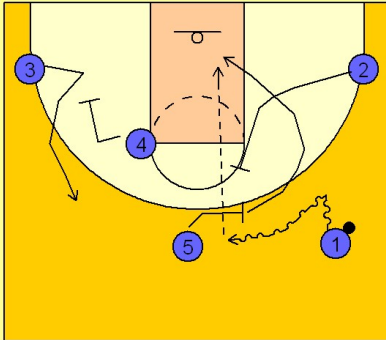


Texas

Early offense (3)

1

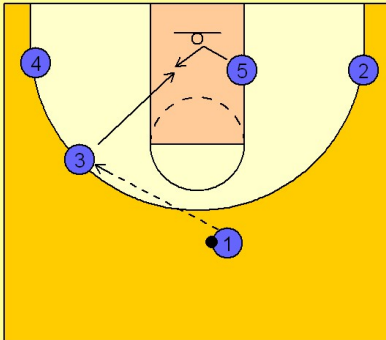
Texas Early Offense



As #1 drives the ball up the right sideline #5 moves over to set a ball screen for #1. #1 drives over the top of the screen towards the middle of the floor. As this is happening, #4 screens away for #3 on the left wing while #2 moves in and sets a back screen for the screener #5. #5 rolls to the basket looking for the pass from #1.

2

Texas Early Offense



If #1 cannot make the direct pass he will look to swing the ball to the left wing area player #3. #3 will look for #5 sliding over for post position on the left low block.