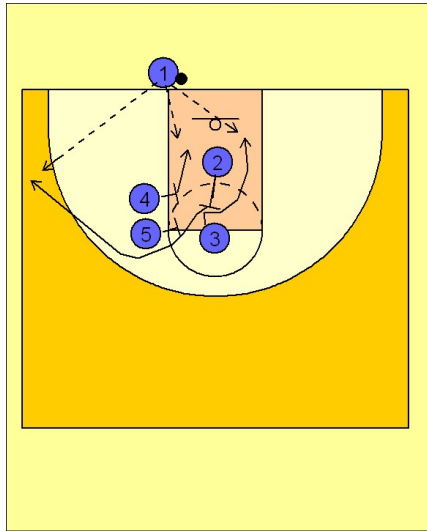


Texas

Ob under vs. man (3)

1



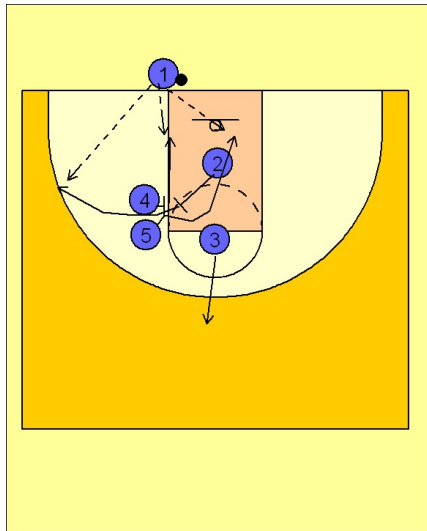
Texas OB Under vs. Man Defense

Here is a set that they use with two different options.

First, #2 can back screen #3. #3 cuts to the basket while #2 uses the double screen from #4 and #5 breaking to the ball side wing / corner area.

The low man on the double screen, #4, breaks to the ball after #2 comes off the double.

2



Texas OB Under vs. Man Defense

The other option is for #2 to fake coming at #3 and then back screen #5 instead. #5 cuts to the basket off the screen while #2 then gets a single screen from #4. #2 breaks to the ball side wing / corner area while #4 cuts to the basket after #2 uses the screen.

#3 breaks straight out as a safety option.