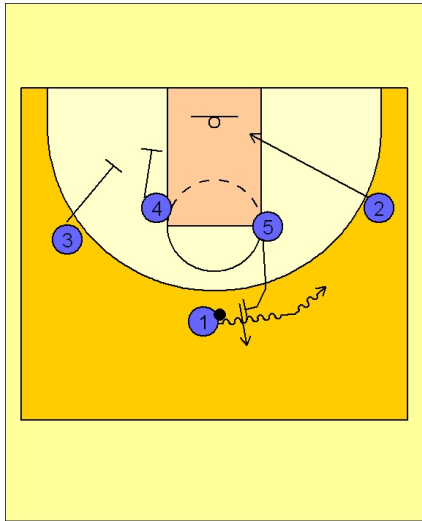




Set play (10)



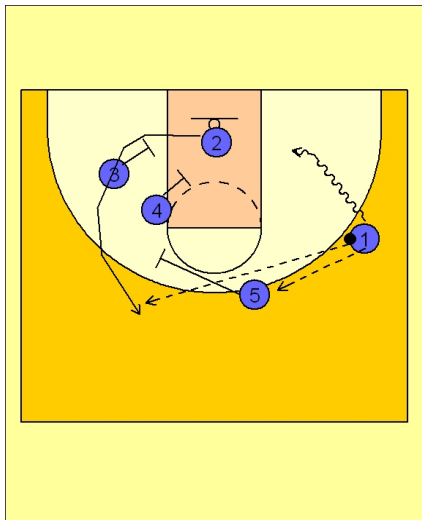
Texas Set Play vs. Man

1 - 4 set to begin.

#5 steps out and executes a screen and roll with #1 in the center of the floor.

#1 drives the ball off the ball screen to the right side of the floor while the wing player #2 cuts down into the lane.

#3 and #4 begin setting up for a double screen on the opposite low block area.



Texas Set Play vs. Man

Once #1 gets to the wing he has a couple of options.

He can look to penetrate the open basketball area, he can pass back to #5 if he is a good outside shooter and stepped back after ball screening, or he can pass to #2 coming off the screens from #3, #4 and #5.