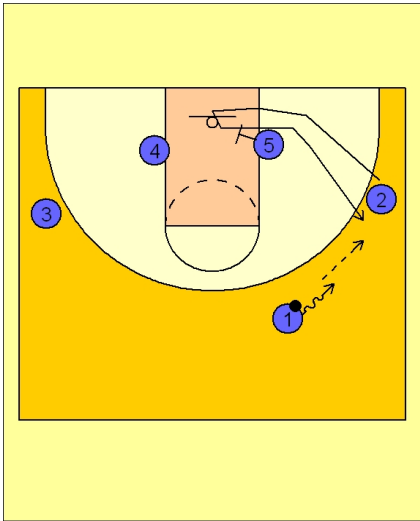


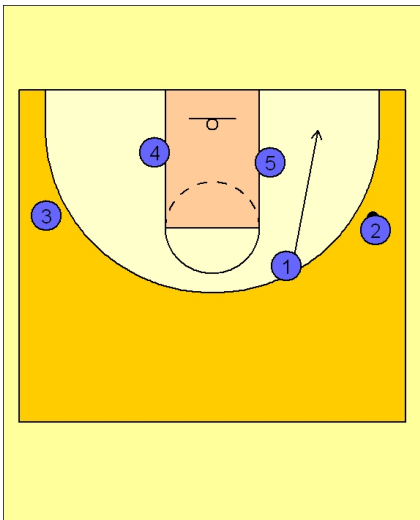


Set play (13)



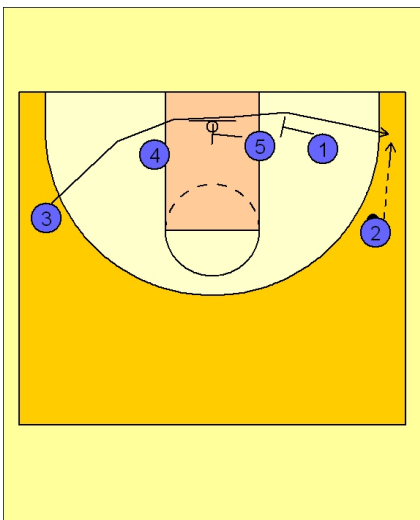
Texas Set Play

#1 dribbles toward the right wing and passes to #2 who has broken down into the lane and popped out to the right wing off of a down screen from #5.



Texas Set Play

After #1 passed to #2 on the right wing, he cuts down to the right short corner area near #5.



Texas Set Play

#3 now cuts off a double staggered screen from #5 and #1 and tries to get open in the corner for a shot.



Texas Set Play

If #3 does not have a shot, #1 and #5 continue their movement across the lane.

#1 breaks out to the opposite wing area while #4 breaks across to the ballside low block area, using the screen from #5.

