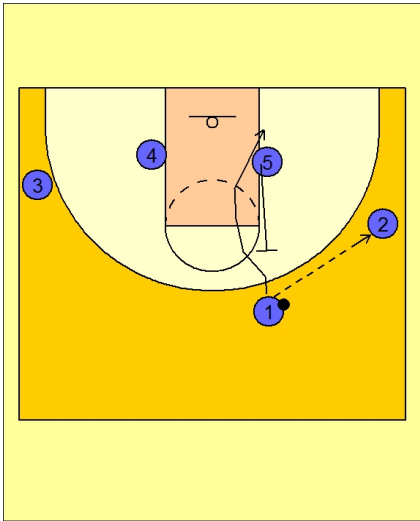


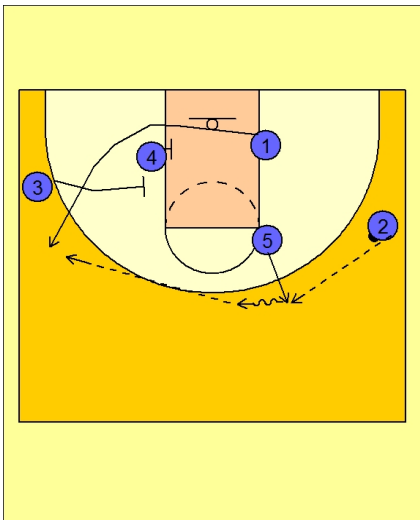


Set play (15)



Texas Set Play

#1 enters to #2 on the right wing and then uses a UCLA cut to get open on the ball side block.

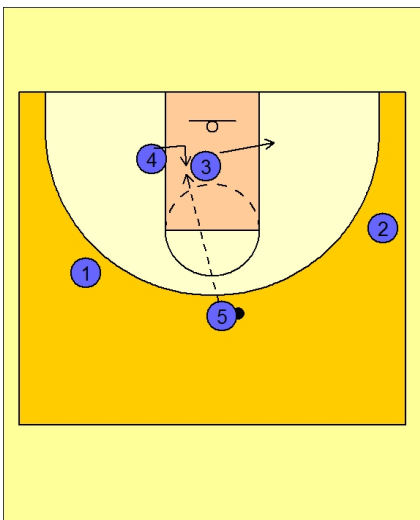


Texas Set Play

#5 steps out after back screening for #1. #2 passes to #5.

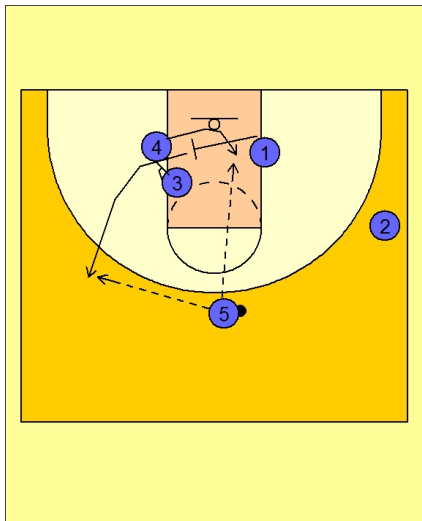
#5 centers the ball with a few dribbles while #1 cuts off a double staggered screen from #3 and #4.

If #1 is open, #5 delivers the pass.



Texas Set Play

If #1 is not open, #3 cuts across the lane as soon as #1 cuts off the staggered screen. At the same time, #4 is ducking in the lane for the high / low entry pass from #5.



Texas Set Play

An adjustment they will make on this play is for #1, instead of coming off the double staggered screen, will set a cross screen for #4.

After screening, #3 screens for #1 popping out to the wing for the open jump shot.