

Texas

Set play (1)

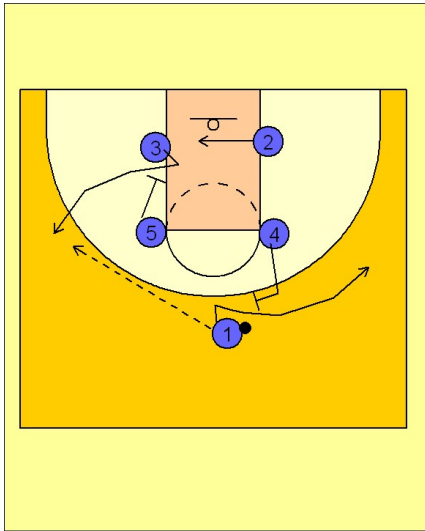
1

Texas Set Play

Box set to begin.

(#5) down screens for (#3) bringing him out to the corner. (#2) starts across the middle of the lane.

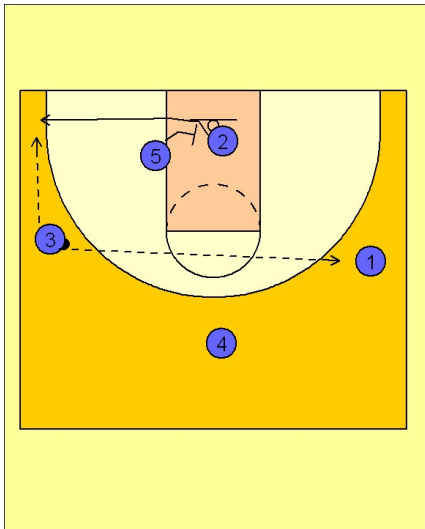
(#1) hits (#3) popping out to the wing off of (#5's) screen. (#4) sets a back screen for (#1) to fade to the opposite wing area.



2

Texas Set Play

(#3) has the option to hit (#1) fading over to the opposite wing or he can hit (#2) who has now received a screen from (#5) to pop to the ball side corner.



3

Texas Set Play

If the ball is skipped to (#1), Texas will run a pick and roll with the (#4) man screening for (#1).

